

DS-PKF1-WB Wireless Keyfob Quick Start Guide

English

1 APPEARANCE

- 1. Away Arming
 - 2. Status Check
 - 3. Indicator
 - 4. Disarming
 - 5. Stay Arming
- Indicator
- a. Lock / Unlock Device

2 ENROLLMENT

3 REPLACE BATTERY

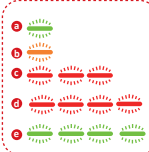
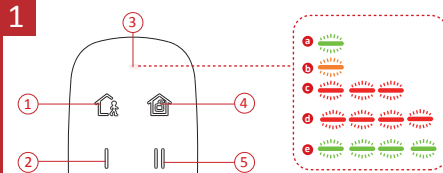
Indication and Function

Scan the QR code for more information and operation help.

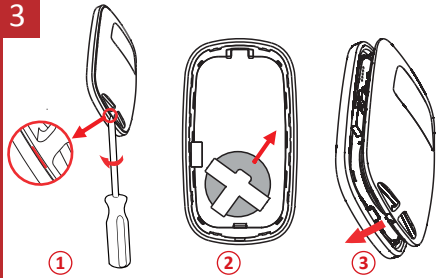
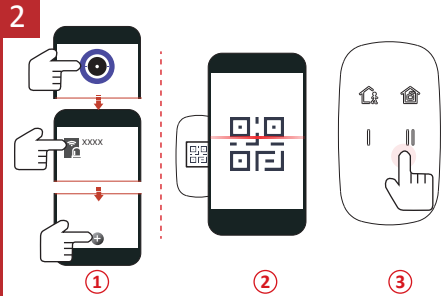
Specification

RF Frequency	433MHz	Battery voltage	3V
Modulation	2GFSK	Min. operation voltage	2.1V +/- 5%
RF range	500m(Open area)	Standard battery life	3 years
Indicator	Three-color LED	Operation temperature	-10°C to +55°C
Key	4	Dimension(H x W x D)	63.2mmx35.2mmx11.3mm
Battery	CR2032 x 1 (included)	Weight	16g

Device Serial No.



User Manual



Español

1 ASPECTO

- 1. Armado para ausencias
 - 2. Comprobación del estado
 - 3. Piloto
 - 4. Desarmado
 - 5. Armado en casa
- a. Bloquear / desbloquear dispositivo

2 REGISTRO

3 REEMPLAZO DE LA BATERIA

Indicación y función

Escane el código QR para obtener más información y ayuda sobre el funcionamiento.

Especificación

Frecuencia RF	433 MHz	Voltaje de la pila	3V
Modulación	2GFSK	Tensión mínima de funcionamiento	2.1 V +/- 5 %
Alcance de radiodifusión	500 m (área abierta)	Vida útil de la batería convencional	3 años
Piloto	LED tricolor	Temperatura de funcionamiento	De -10 °C a +55 °C
Clave	4	Dimensiones	63.2 mm x 35.2 mm x 11.3 mm
Batería	1 batería CR2032 (incluida)	Peso	16 g

Português

1 ASPETO

- 1. Ativação ausente
 - 2. Verificação do estado
 - 3. Indicador
 - 4. Desativar
 - 5. Ativação presente
- a. Bloquear / Desbloquear dispositivo

2 REGISTRO

3 SUBSTITUIR PILHA

Indicação e Função

Faça a leitura do código QR para obter mais informações e ajuda sobre o funcionamento.

Especificações

Frequência RF	433 MHz	Tensão da pilha	3V
Modulação	2GFSK	Tensão mínima de funcionamento	2.1 V +/- 5%
Alcance de RF	500 m (área aberta)	Duração da pilha standard	3 anos
Indicador	LED de três cores	Temperatura de funcionamento	30 °C a +55 °C
Chave	4	Dimensões (A x L x P)	63,2 mm x 35,2 mm x 11,3 mm
Pilha	CR2032 x 1 (incluída)	Peso	16 g

UD20383B

©2020 Hangzhou Hikvision Digital Technology Co., Ltd. All rights reserved.

This is a class A product. In a domestic environment this product may cause radio interference in which case the user may be required to take adequate measures.

Warning
Please take attention that changes or modification not expressly approved by the party responsible for compliance could void the user's authority to operate the equipment.

FCC compliance: This equipment has been tested and found to comply with the limits for a Class B digital device, pursuant to part 15 of the FCC Rules. These limits are designed to provide reasonable protection against harmful interference in a residential installation. This equipment generates, uses and can radiate radio frequency energy and, if not installed and used in accordance with the instructions, may cause harmful interference to radio communications. However, there is no guarantee that interference will not occur in a particular installation. If this equipment does cause harmful interference to a residential installation, the user is encouraged to try to correct the interference by one or more of the following measures:

— Reorient or relocate the receiving antenna.

— Increase the separation between the equipment and receiver.

— Connect the equipment into an outlet on a circuit different from that to which the receiver is connected.

— Consult the dealer or an experienced radio/TV technician for help.

This equipment should be installed and operated with a minimum distance 20cm between the radiator and your body.

FCC conditions
This device complies with part 15 of the FCC Rules. Operation is subject to the following two conditions:

1. This device may not cause harmful interference.

2. This device must accept any interference received, including interference that may cause undesired operation

2. Keep new and used batteries away from the children.

3. If the battery compartment does not close securely, stop using the product and keep it away from children.

4. If the battery compartment is not closed properly, it may result in a fire or explosion.

5. Do not subject the battery to extremely low air pressure, which may result in a fire or explosion or the leakage of harmful liquid or gas.

6. Dispose of used batteries according to the instructions.

INSTALLATION CAUTION
The additional weight shall be equal to three times the weight of the equipment but not less than 50N. The equipment and its associated mounting means shall remain secure during the installation. After the installation, the equipment, including any associated mounting parts, shall not be damaged.

© 2020 Hangzhou Hikvision Digital Technology Co., Ltd. Todos los derechos reservados.

This is a class A product. In a domestic environment this product may cause radio interference in which case the user may be required to take adequate measures.

Warning
Please take attention that changes or modification not expressly approved by the party responsible for compliance could void the user's authority to operate the equipment.

FCC compliance: This equipment has been tested and found to comply with the limits for a Class B digital device, pursuant to part 15 of the FCC Rules. These limits are designed to provide reasonable protection against harmful interference in a residential installation. This equipment generates, uses and can radiate radio frequency energy and, if not installed and used in accordance with the instructions, may cause harmful interference to radio communications. However, there is no guarantee that interference will not occur in a particular installation. If this equipment does cause harmful interference to a residential installation, the user is encouraged to try to correct the interference by one or more of the following measures:

— Reorient or relocate the receiving antenna.

— Increase the separation between the equipment and receiver.

— Connect the equipment into an outlet on a circuit different from that to which the receiver is connected.

— Consult the dealer or an experienced radio/TV technician for help.

This equipment should be installed and operated with a minimum distance 20cm between the radiator and your body.

FCC conditions
This device complies with part 15 of the FCC Rules. Operation is subject to the following two conditions:

1. This device may not cause harmful interference.

2. This device must accept any interference received, including interference that may cause undesired operation

2. Keep new and used batteries away from the children.

3. If the battery compartment does not close securely, stop using the product and keep it away from children.

4. If the battery compartment is not closed properly, it may result in a fire or explosion.

5. Do not subject the battery to extremely low air pressure, which may result in a fire or explosion or the leakage of harmful liquid or gas.

6. Dispose of used batteries according to the instructions.

INSTALLATION CAUTION
The additional weight shall be equal to three times the weight of the equipment but not less than 50N. The equipment and its associated mounting means shall remain secure during the installation. After the installation, the equipment, including any associated mounting parts, shall not be damaged.



Warning
This is a class A product. In a domestic environment this product may cause radio interference in which case the user may be required to take adequate measures.



FCC Information
Please take attention that changes or modification not expressly approved by the party responsible for compliance could void the user's authority to operate the equipment.

FCC compliance: This equipment has been tested and found to comply with the limits for a Class B digital device, pursuant to part 15 of the FCC Rules. These limits are designed to provide reasonable protection against harmful interference in a residential installation. This equipment generates, uses and can radiate radio frequency energy and, if not installed and used in accordance with the instructions, may cause harmful interference to radio communications. However, there is no guarantee that interference will not occur in a particular installation. If this equipment does cause harmful interference to a residential installation, the user is encouraged to try to correct the interference by one or more of the following measures:

— Reorient or relocate the receiving antenna.

— Increase the separation between the equipment and receiver.

— Connect the equipment into an outlet on a circuit different from that to which the receiver is connected.

— Consult the dealer or an experienced radio/TV technician for help.

This equipment should be installed and operated with a minimum distance 20cm between the radiator and your body.

FCC conditions
This device complies with part 15 of the FCC Rules. Operation is subject to the following two conditions:

1. This device may not cause harmful interference.

2. This device must accept any interference received, including interference that may cause undesired operation

© 2020 Hangzhou Hikvision Digital Technology Co., Ltd. Todos los derechos reservados.

This is a class A product. In a domestic environment this product may cause radio interference in which case the user may be required to take adequate measures.

Warning
Please take attention that changes or modification not expressly approved by the party responsible for compliance could void the user's authority to operate the equipment.

FCC compliance: This equipment has been tested and found to comply with the limits for a Class B digital device, pursuant to part 15 of the FCC Rules. These limits are designed to provide reasonable protection against harmful interference in a residential installation. This equipment generates, uses and can radiate radio frequency energy and, if not installed and used in accordance with the instructions, may cause harmful interference to radio communications. However, there is no guarantee that interference will not occur in a particular installation. If this equipment does cause harmful interference to a residential installation, the user is encouraged to try to correct the interference by one or more of the following measures:

— Reorient or relocate the receiving antenna.

— Increase the separation between the equipment and receiver.

— Connect the equipment into an outlet on a circuit different from that to which the receiver is connected.

— Consult the dealer or an experienced radio/TV technician for help.

This equipment should be installed and operated with a minimum distance 20cm between the radiator and your body.

FCC conditions
This device complies with part 15 of the FCC Rules. Operation is subject to the following two conditions:

1. This device may not cause harmful interference.

2. This device must accept any interference received, including interference that may cause undesired operation

2. Keep new and used batteries away from the children.

3. If the battery compartment does not close securely, stop using the product and keep it away from children.

4. If the battery compartment is not closed properly, it may result in a fire or explosion.

5. Do not subject the battery to extremely low air pressure, which may result in a fire or explosion or the leakage of harmful liquid or gas.

6. Dispose of used batteries according to the instructions.

INSTALLATION CAUTION
The additional weight shall be equal to three times the weight of the equipment but not less than 50N. The equipment and its associated mounting means shall remain secure during the installation. After the installation, the equipment, including any associated mounting parts, shall not be damaged.