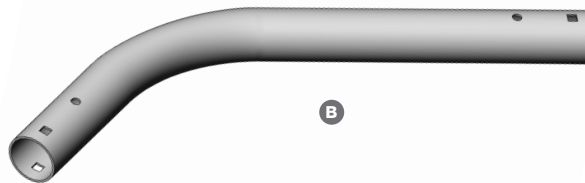
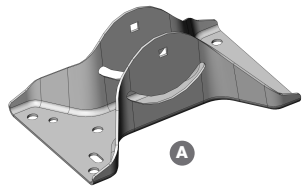


Guia de Instalacion

Antena universal

Model: UB-AM



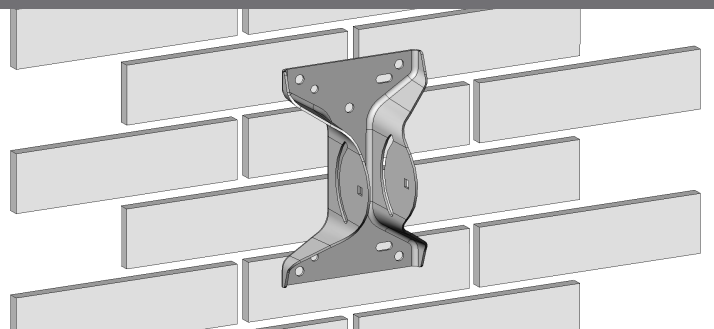
Contents	Qty.
A Base	1
B Pole	1
C M6 pivot bolt	1
D M6 adjusting bolt	2
E M6 serrated flange nut	3

Tools Required for Mounting

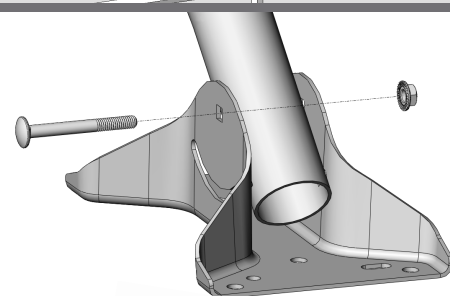
10mm wrench (Qty. 1)

* Products may be different from pictures and are subject to change without prior notice

1 Install the base to the mounting surface



2 Install the pole to the base using pivot bolt



3 Install adjusting bolts

