



# **Complementos MIP HikAssistant (ANPR)**

**User Manual**

## Legal Information

### User Manual

©2019 Hangzhou Hikvision Digital Technology Co., Ltd.

### About this Manual

This Manual is subject to domestic and international copyright protection. Hangzhou Hikvision Digital Technology Co., Ltd. ("Hikvision") reserves all rights to this manual. This manual cannot be reproduced, changed, translated, or distributed, partially or wholly, by any means, without the prior written permission of Hikvision.

Please use this user manual under the guidance of professionals.

### Trademarks

**HIKVISION** and other Hikvision marks are the property of Hikvision and are registered trademarks or the subject of applications for the same by Hikvision and/or its affiliates. Other trademarks mentioned in this manual are the properties of their respective owners. No right of license is given to use such trademarks without express permission.

### Disclaimer

TO THE MAXIMUM EXTENT PERMITTED BY APPLICABLE LAW, HIKVISION MAKES NO WARRANTIES, EXPRESS OR IMPLIED, INCLUDING WITHOUT LIMITATION THE IMPLIED WARRANTIES OF MERCHANTABILITY AND FITNESS FOR A PARTICULAR PURPOSE, REGARDING THIS MANUAL. HIKVISION DOES NOT WARRANT, GUARANTEE, OR MAKE ANY REPRESENTATIONS REGARDING THE USE OF THE MANUAL, OR THE CORRECTNESS, ACCURACY, OR RELIABILITY OF INFORMATION CONTAINED HEREIN. YOUR USE OF THIS MANUAL AND ANY RELIANCE ON THIS MANUAL SHALL BE WHOLLY AT YOUR OWN RISK AND RESPONSIBILITY.

REGARDING TO THE PRODUCT WITH INTERNET ACCESS, THE USE OF PRODUCT SHALL BE WHOLLY AT YOUR OWN RISKS. HIKVISION SHALL NOT TAKE ANY RESPONSIBILITIES FOR ABNORMAL OPERATION, PRIVACY LEAKAGE OR OTHER DAMAGES RESULTING FROM CYBER ATTACK, HACKER ATTACK, VIRUS INSPECTION, OR OTHER INTERNET SECURITY RISKS; HOWEVER, HIKVISION WILL PROVIDE TIMELY TECHNICAL SUPPORT IF REQUIRED.

SURVEILLANCE LAWS VARY BY JURISDICTION. PLEASE CHECK ALL RELEVANT LAWS IN YOUR JURISDICTION BEFORE USING THIS PRODUCT IN ORDER TO ENSURE THAT YOUR USE CONFORMS THE APPLICABLE LAW. HIKVISION SHALL NOT BE LIABLE IN THE EVENT THAT THIS PRODUCT IS USED WITH ILLEGITIMATE PURPOSES.

IN THE EVENT OF ANY CONFLICTS BETWEEN THIS MANUAL AND THE APPLICABLE LAW, THE LATER PREVAILS.

# Contents

<b>Chapter 1 Overview .....</b>	<b>1</b>
1.1 Introduction .....	1
1.2 Runtime Environment .....	1
1.3 Product Scopes .....	1
1.4 Update History .....	3
<b>Chapter 2 Installation and Uninstallation .....</b>	<b>4</b>
2.1 Install Plug-ins .....	4
2.1.1 Install Service Plug-in .....	4
2.1.2 Install ANPR Plug-in on Management Client .....	9
2.1.3 Install ANPR Plug-in on Smart Client .....	15
2.2 Uninstall Plug-ins .....	21
<b>Chapter 3 Log in to Milestone Server .....</b>	<b>25</b>
<b>Chapter 4 Add Hikvision Device .....</b>	<b>27</b>
<b>Chapter 5 Receiving Settings .....</b>	<b>33</b>
5.1 Enable ANPR Result Receiving .....	33
5.2 Configure License Plate List .....	34
5.3 Add ANPR Event Type .....	36
5.4 Set ANPR Event Linkage .....	38
<b>Chapter 6 Receive ANPR Result .....</b>	<b>42</b>

# Chapter 1 Overview

**Los complementos de MIP HikAssistant son proporcionados por Hikvision para Milestone SDK. Pueden proporcionar un servicio básico para la conexión entre dispositivos Hikvision y Milestoneserver, convertir los datos en formato de protocolo Hikvision a formato y analizar analizar datos obtenidos del servidor Milestone.**

## 1.1 Introduction

The Automatic Number Plate Recognition (ANPR) function provides an intelligent yet highly intuitive solution for parking lots or traffic management. This function helps recognize the license plates of passing vehicles or captured vehicle pictures, and then define the passing rules or configure lists to control the entrance and exit of vehicles.

## 1.2 Runtime Environment

~~The software and hardware environment which can install and run the Milestone XProtect client are required, and the system environment for installing MIP HikAssistant plug-ins is the same as that for installing Milestone XProtect client software with version 2018.~~  
**Note** The software and hardware environment which can install and run the Milestone XProtect client are required, and the system environment for installing MIP HikAssistant plug-ins is the same as that for installing Milestone XProtect client software with version 2018. with 32-bit operating system. For details about the supported running environment, refer to the *User Manual of Milestone XProtect VMS*.

---

## 1.3 Product Scopes

The product scopes show the software versions, types, and models of Hikvision products that support interacting with the Milestone server by using MIP HikAssistant plug-ins.

The recommended Milestone products are the client software of Milestone XProtect series with Corporate version 2018 or above.

The following Hikvision devices are available for the ANPR function.

**Table 1-1 Supported Product Type and Model**

Product Type	Product Model
ANPR Camera with Version 5.4.5	DS-2CD4A26FWD-IZS/P (2.8 mm to 12 mm)
	DS-2CD7026G0/P
	DS-2CD7026G0/P-AP

## MIP HikAssistant Plug-ins (ANPR) User Manual

---

Product Type	Product Model
	DS-2CD7A26G0/P-IZS (2.8mm to 12mm)
	DS-2CD7A26G0/P-IZHS (2.8mm to 12mm)
	DS-2CD7A26G0/P-IZS (8mm to 32mm)
	DS-2CD7A26G0/P-IZHS (8mm to 32mm)
	DS-2CD7A26G0/P-LZS (2.8mm to 12mm)
	DS-2CD7A26G0/P-LZHS (2.8mm to 12mm)
	DS-2CD7A26G0/P-LZS (8mm to 32mm)
	DS-2CD7A26G0/P-LZHS (8mm to 32mm)
	DS-2CD7026G0/EP-I (3.8mm to 16mm)
	DS-2CD7026G0/EP-IH (3.8mm to 16mm)
	DS-2CD7026G0/EP-I (11mm to 40mm)
	DS-2CD7026G0/EP-IH (11mm to 40mm)
	Traffic Camera
DS-TCG227-AIR	
iDS-TCM203-A/0832	
iDS-TCM203-A/5313	
iDS-TCV300-A6E/1140/H1	
iDS-TCV300-A6I/1140/H1	
iDS-TCV900-AE/25/H1	
iDS-TCV900-AI/25/H1	
iDS-TCV300-A6E/1140	
iDS-TCV300-A6I/1140	
iDS-TCV900-AE/25	
iDS-TCV900-AI/25	
iDS-TCE300-A6/1140	
iDS-TCE900-A/16	
iDS-TCE300-A6/1140	
iDS-TCE900-A/16	

## 1.4 Update History

The update history shows the summary of changes in MIP HikAssistant plug-ins for ANPR function according to different products or projects, and the updated time.

### Summary of Changes in Version 1.0.4.3\_05/2019

New document.

## Chapter 2 Installation and Uninstallation

### 2.1 Install Plug-ins

MIP HikAssistant plug-ins contain three components that can realize ANPR function, and they are provided through three installation packages, so you can install the components in different paths or computers as required.

#### HikAssistantService

This plug-in provides basic service for the interaction between Hikvision ANPR or traffic cameras and the Milestone server at the background.

#### HikAssistantConfig

This plug-in contains ANPR component which is a dynamic link library for configuring ANPR parameters on Milestone XProtect Management Client. It should be installed in the computer running with Milestone XProtect Management Client, and it should be used with the ANPR component in HikAssistantCtrl in pairs.

#### HikAssistantCtrl

This plug-in contains ANPR component that is used to receive ANPR information of Hikvision ANPR and traffic cameras on Milestone XProtect Smart Client. It should be installed in the computer running with Milestone XProtect Smart Client, and it should be used with the ANPR component in HikAssistantConfig in pairs.



#### Note

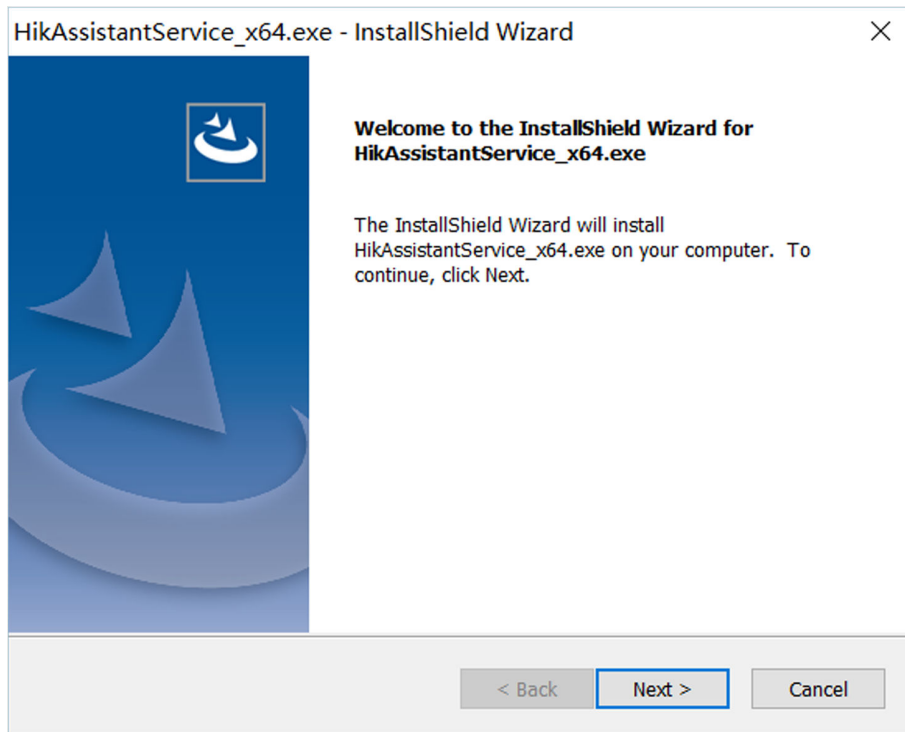
- The MIP HikAssistant plug-ins cannot be installed when the Milestone XProtect client software is running.
  - The ANPR function is not compatible with MIP HikAssistant plug-ins with version 1.0.2.8 or below. You should uninstall MIP HikAssistant plug-ins with old version before installation. For details about the uninstallation of the plug-ins, refer to ***Uninstall Plug-ins***.
- 

#### 2.1.1 Install Service Plug-in

The HikAssistantService plug-in should be installed for communication between Hikvision devices and the Milestone server at the background. You can install the HikAssistantService plug-in in the computer running with the Milestone server, or in an independent computer without any of the Milestone server.

#### Steps

1. Double-click the executable program file of HikAssistantService to enter the welcome page of the InstallShield Wizard.



**Figure 2-1 Welcome Page of HikAssistantService InstallShield Wizard**

2. Click **Next** to select the component to install.

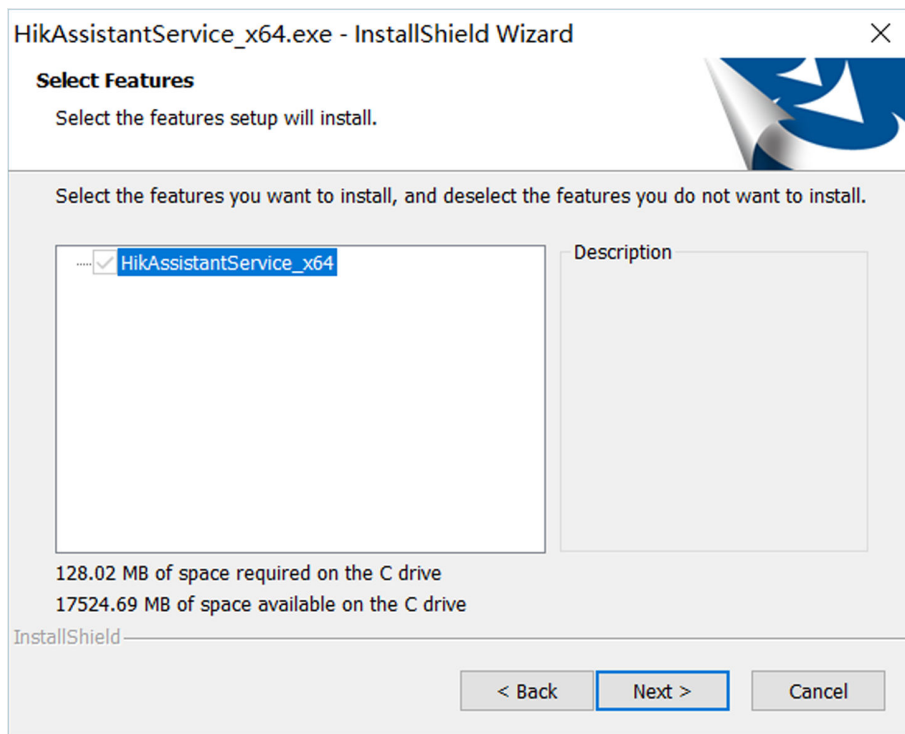
---

 **Note**

The HikAssistantService component will be checked by default and cannot be unchecked.

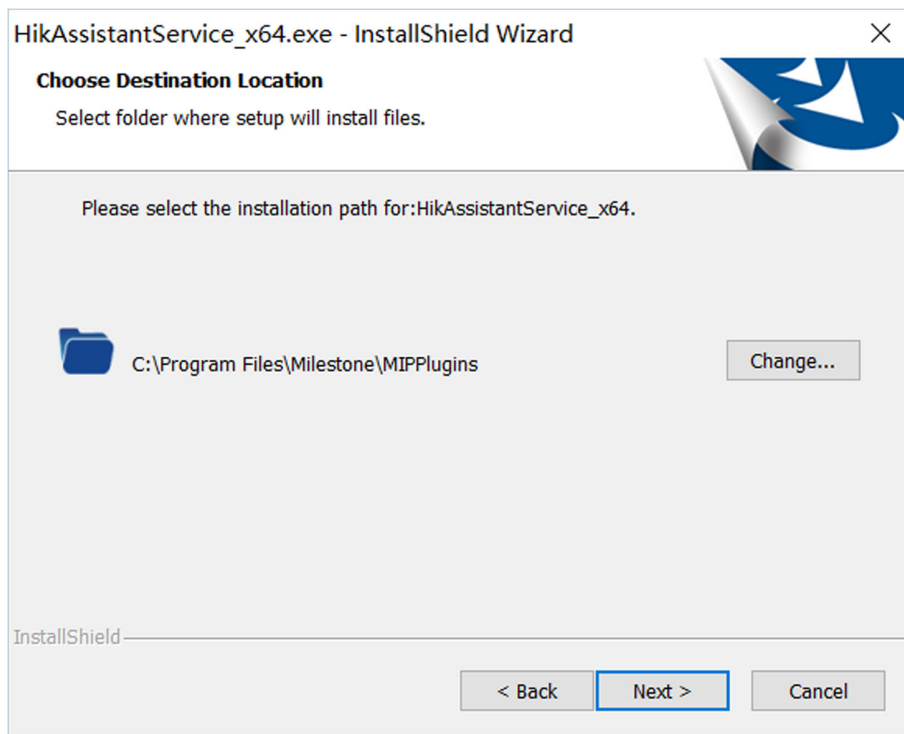
---





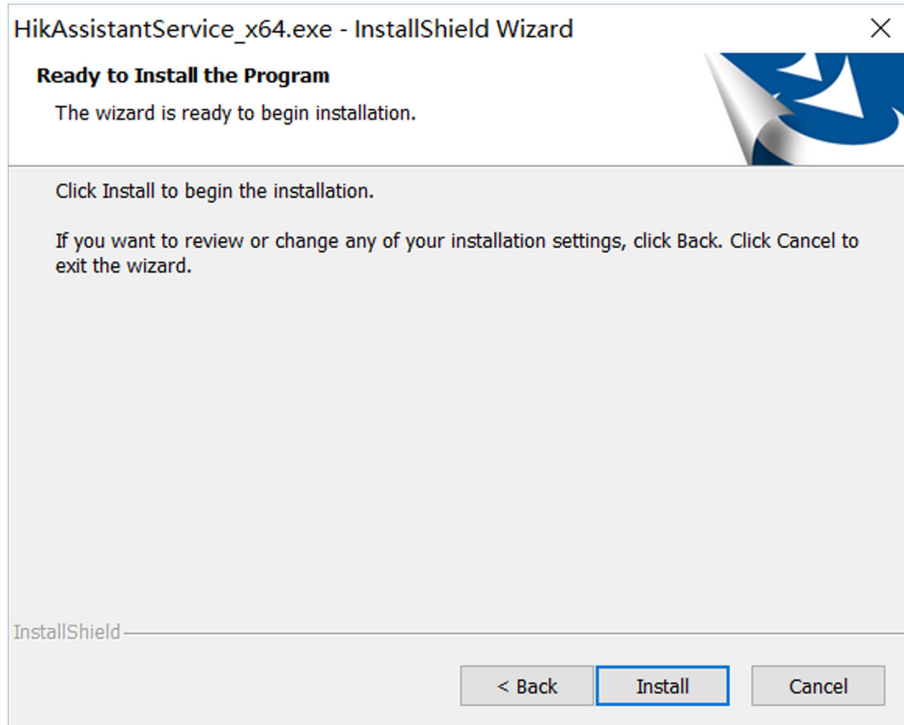
**Figure 2-2 Select Component to Install**

3. Click **Next** to choose the installation location.
4. **Optional:** Click **Change...** to select a proper directory as the installation location to install HikAssistantService, and click **Next**.



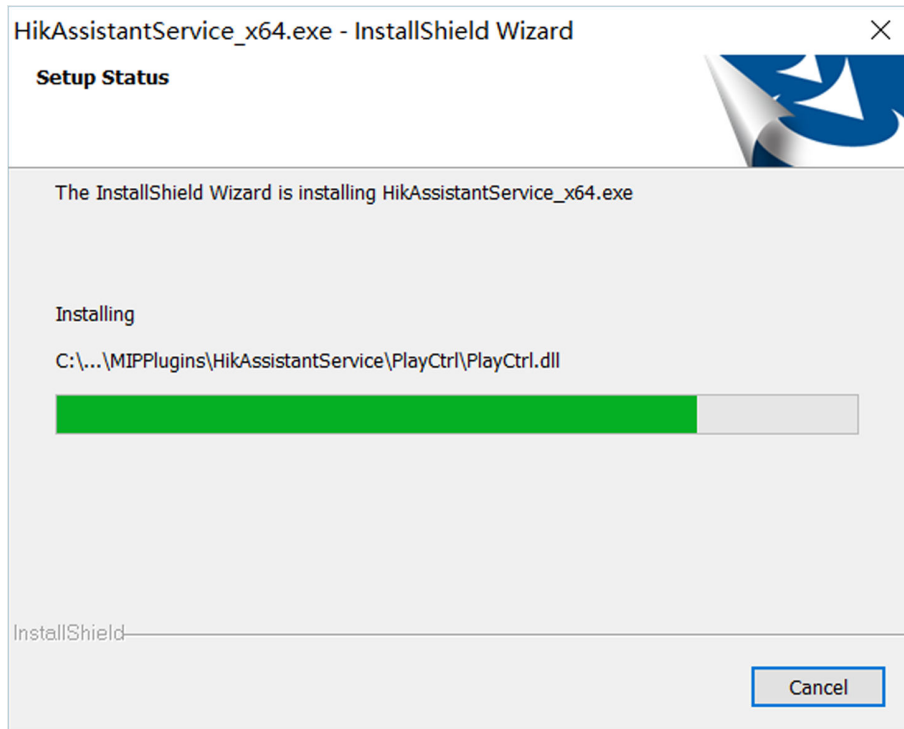
**Figure 2-3 Choose Installation Location of HikAssistantService**

- 5. Optional:** Click **Back** to review or change any of the installation settings.
- 6. Click Install** to start the installation.



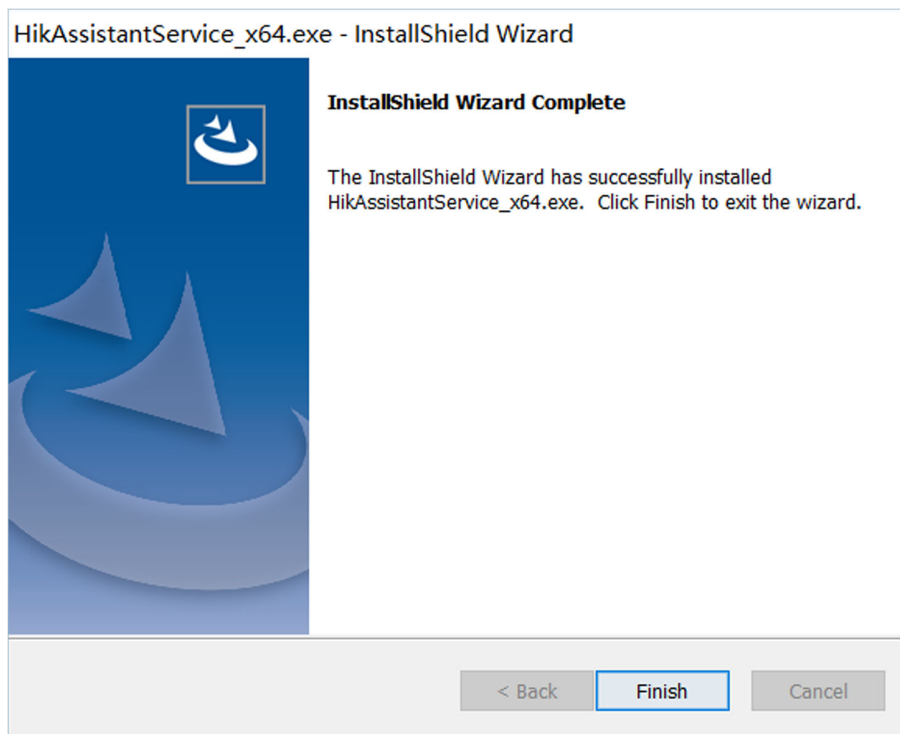
**Figure 2-4 Page of Ready to Install HikAssistantService**

After starting installation, the progress bar will appear to show the installation status, and you can click **Cancel** to cancel the installation if needed.



**Figure 2-5 Progress of Installing HikAssistantService**

7. Click **Finish** to complete the installation after the progress is ended.  
The installed HikAssistantService will automatically start running.



**Figure 2-6 Installing HikAssistantService Succeeded**

### 2.1.2 Install ANPR Plug-in on Management Client

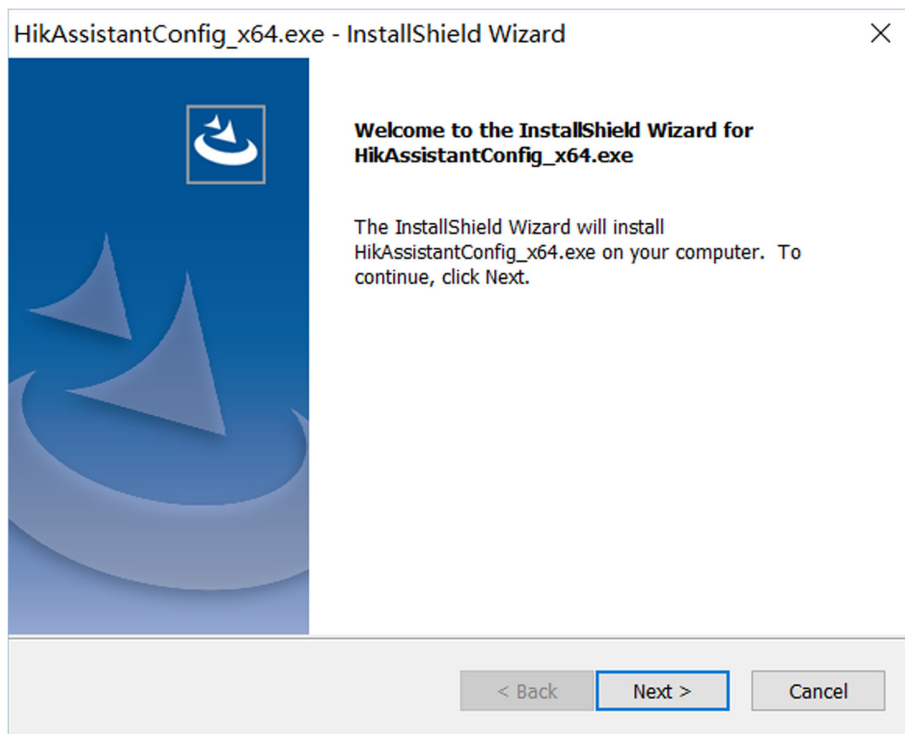
You should install the ANPR plug-in in the computer running with Milestone XProtect Management Client before you can configure ANPR result receiving parameters and alarm linkage rules for Hikvision ANPR and traffic cameras on the Management Client.

#### **Before You Start**

Make sure you have installed Milestone XProtect Management Client. For details about the installation of the Management Client, refer to the *User Manual of Milestone XProtect VMS*.

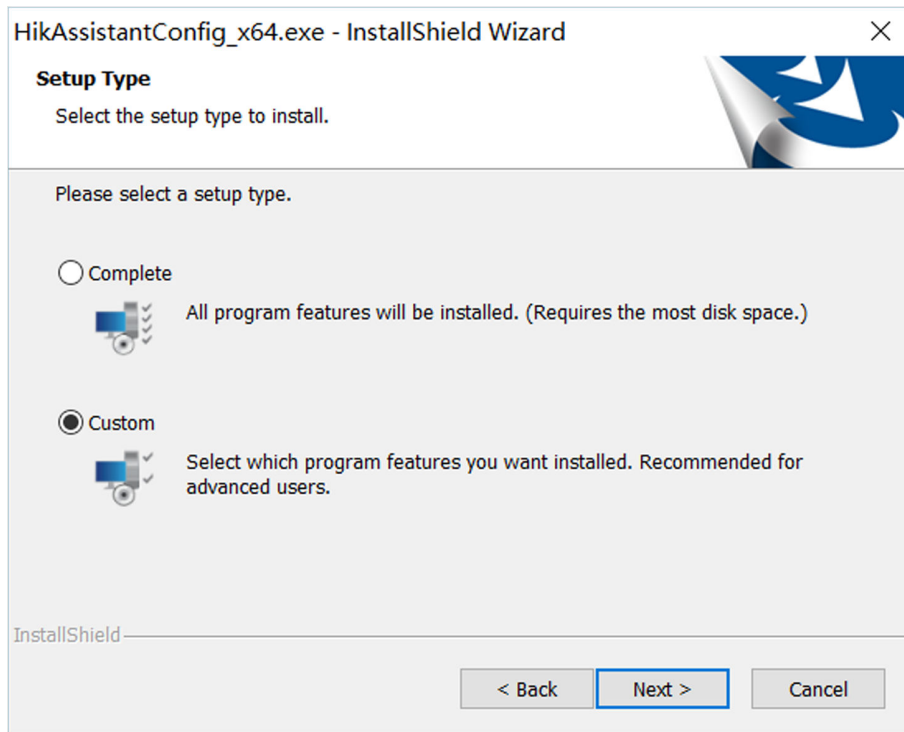
#### **Steps**

1. Double-click the executable program file of HikAssistantConfig to enter the welcome page of the InstallShield Wizard.



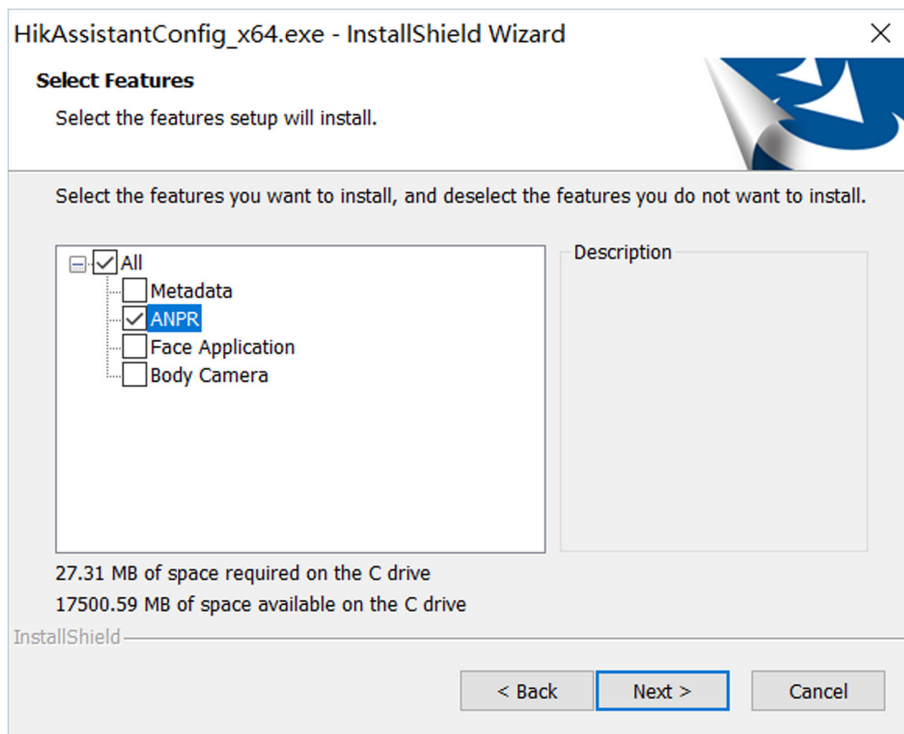
**Figure 2-7 Welcome Page of HikAssistantConfig InstallShield Wizard**

2. Click **Next** to start the installation wizard.
3. Select the setup type of the ANPR plug-in.
  - Select **Custom** as the setup type to select the components as needed and click **Next**.
  - Select **Complete** as the setup type to install all components of HikAssistantConfig (including the ANPR component) in the computer and click **Next**.



**Figure 2-8 Select Setup Type**

4. Select the components of HikAssistantConfig as needed to install.
  - Check **ANPR** in the component list and click **Next**.
  - Check **All** to install all components of HikAssistantConfig (including the ANPR component) in the computer and click **Next**.



**Figure 2-9 Select Components of HikAssistantConfig to Install**

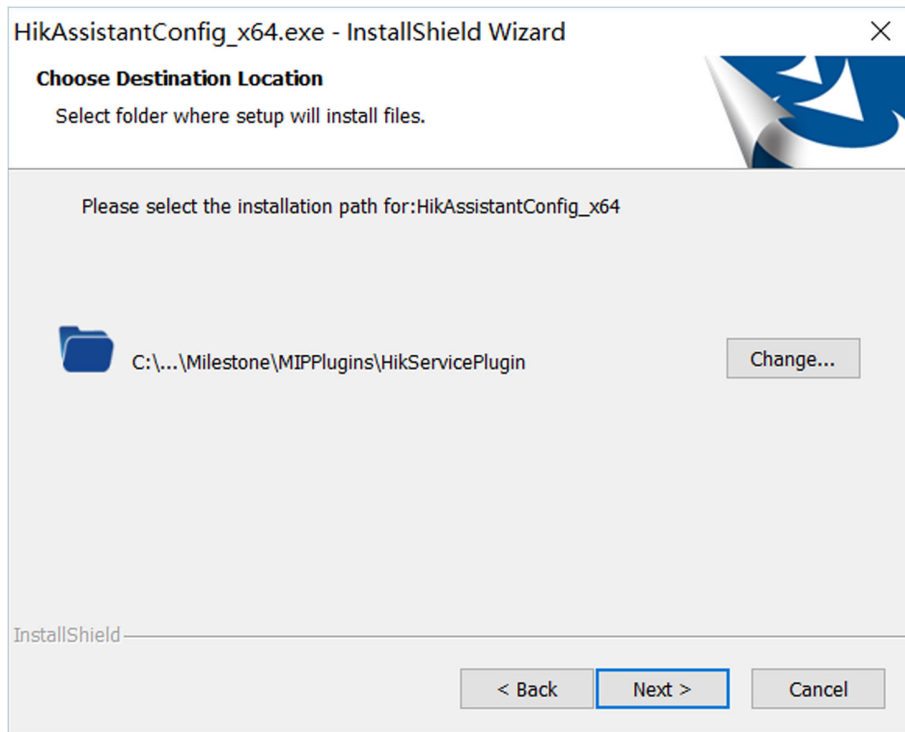
5. Click **Change...** to select a proper directory as the installation location to install the ANPR plug-in, and click **Next**.

---

 **Note**

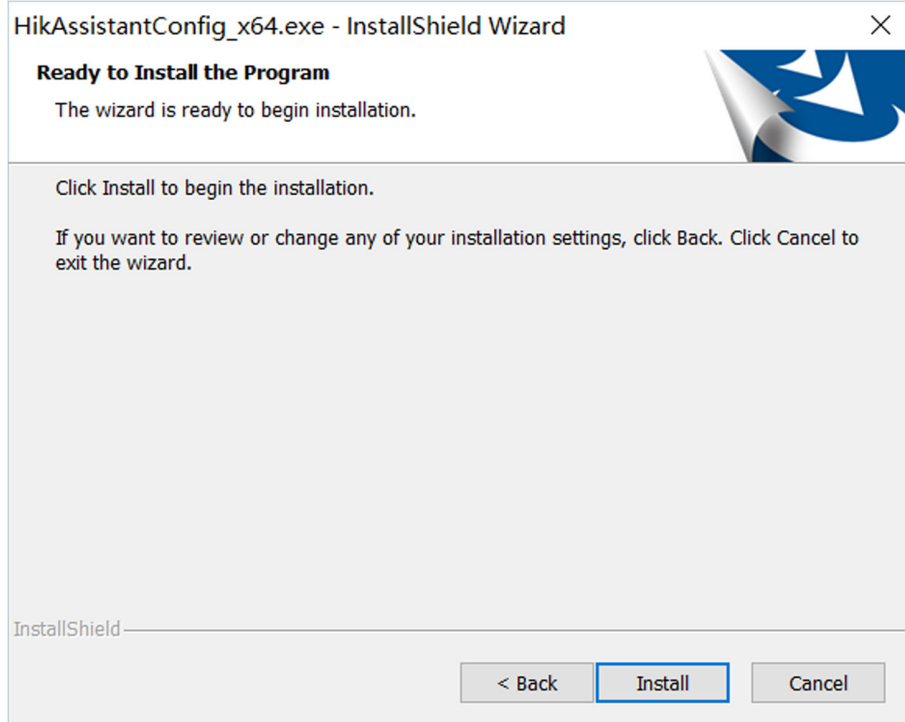
When installing the ANPR plug-in on the Milestone XProtect client software 2017 R3, the installation location must be the default path of **C:\Program Files\Milestone\MIPPlugins** defined by the client software. For other versions of the Milestone XProtect client software, contact the Milestone technical support to get the default installation location of the plug-in.

---



**Figure 2-10 Choose Installation Location of ANPR Plug-in**

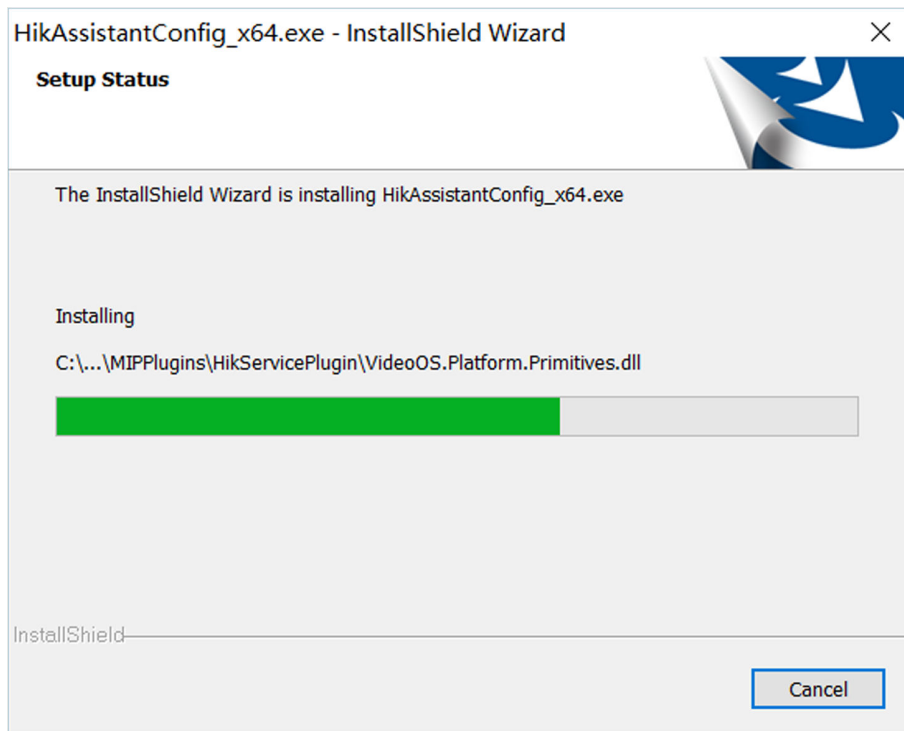
6. **Optional:** Click **Back** to review or change any of the installation settings.
7. Click **Install** to start the installation.



**Figure 2-11 Page of Ready to Install ANPR Plug-in**

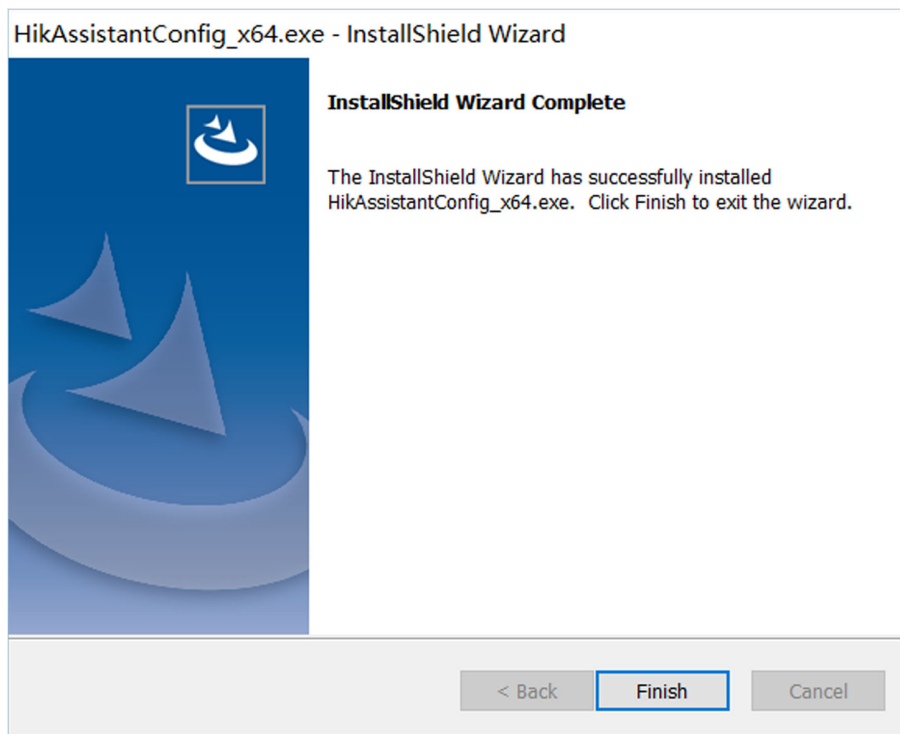


After starting installation, the progress bar will appear to show the installation status, and you can click **Cancel** to cancel the installation if needed.



**Figure 2-12 Progress of Installing ANPR Plug-in**

8. Click **Finish** to complete the installation after the progress is ended.



**Figure 2-13 Installing ANPR Plug-in Succeeded**

### **What to do next**

Double-click Milestone XProtect Management Client to run the client software, and the installed ANPR plug-in will be loaded automatically.

### **2.1.3 Install ANPR Plug-in on Smart Client**

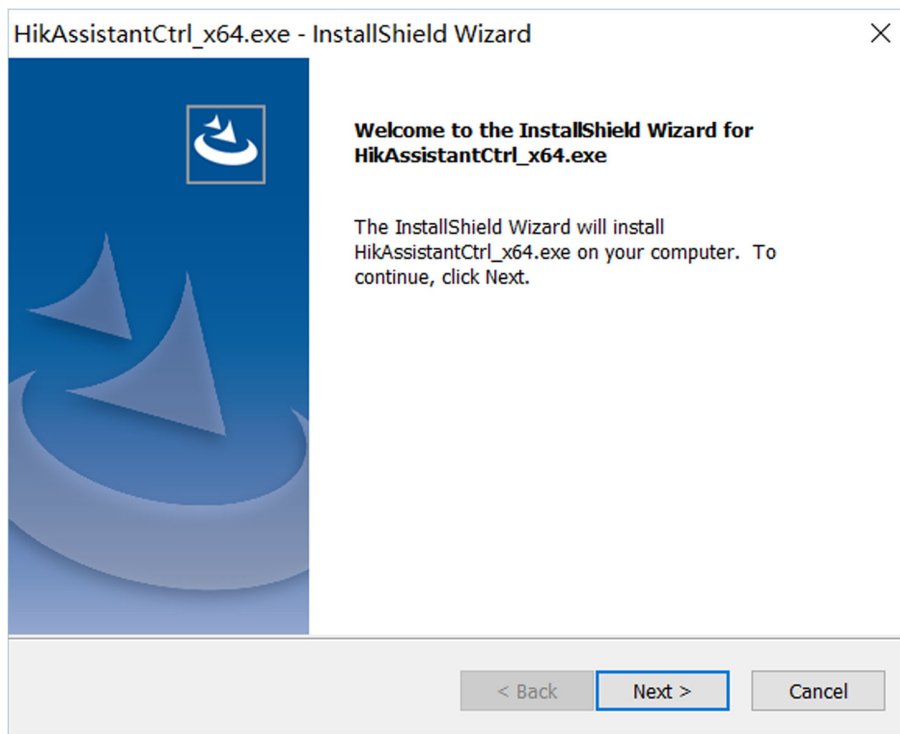
You should install the ANRP plug-in in the computer running with Milestone XProtect Smart Client before you can use the ANPR function of Hikvision ANPR and traffic cameras on the Smart Client.

### **Before You Start**

Make sure you have installed Milestone XProtect Smart Client. For details about the installation of the Smart Client, refer to the *User Manual of Milestone XProtect Smart Client*.

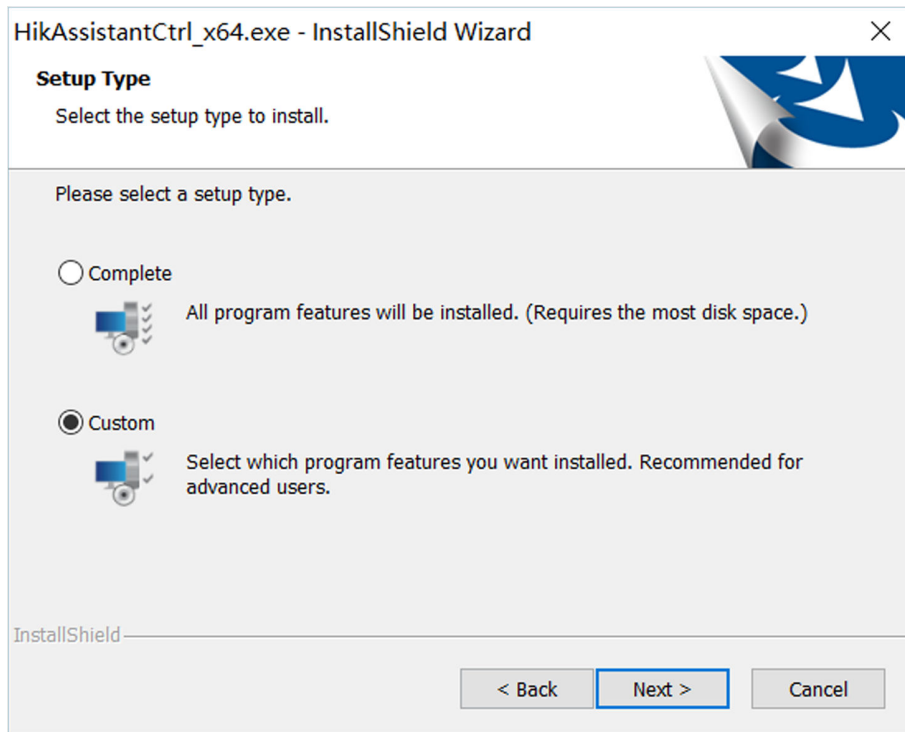
### **Steps**

1. Double-click the executable program file of HikAssistantCtrl to enter the welcome page of the InstallShield Wizard.



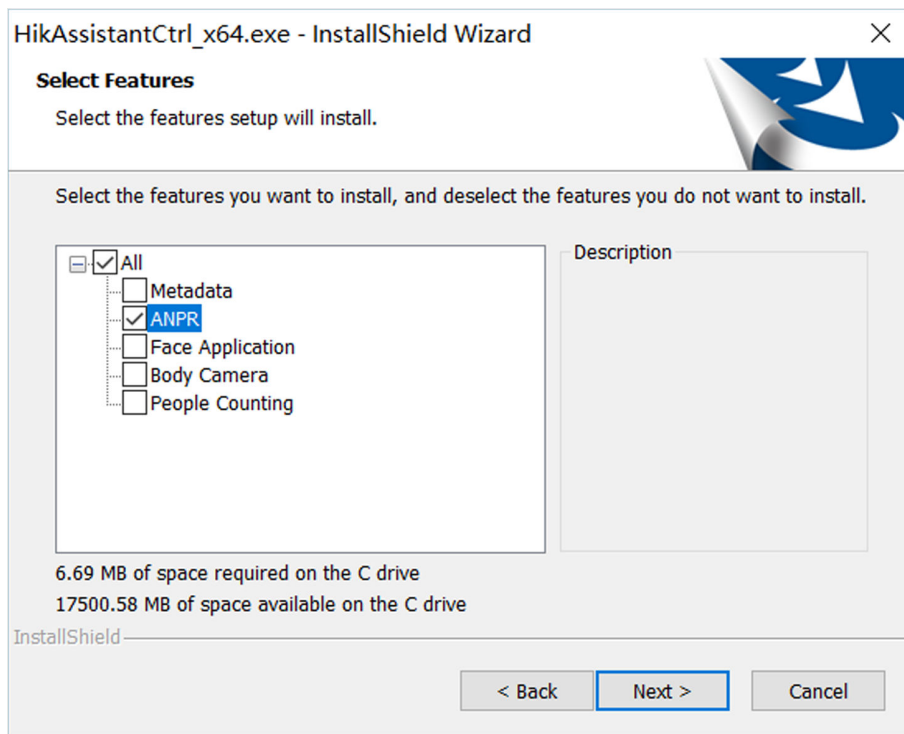
**Figure 2-14 Welcome Page of HikAssistantCtrl InstallShield Wizard**

2. Click **Next** to start the installation wizard.
3. Select the setup type of the ANPR plug-in.
  - Select **Custom** as the setup type to install the components as needed and click **Next**.
  - Select **Complete** as the setup type to install all components of HikAssistantCtrl (including the ANPR component) in the computer and click **Next**.



**Figure 2-15 Select Setup Type**

4. Select the components of HikAssistantCtrl as needed to install.
  - Check **ANPR** in the component list and click **Next**.
  - Check **All** to install all components of HikAssistantCtrl (including the ANPR component) in the computer and click **Next**.



**Figure 2-16 Select Components of HikAssistantCtrl to Install**

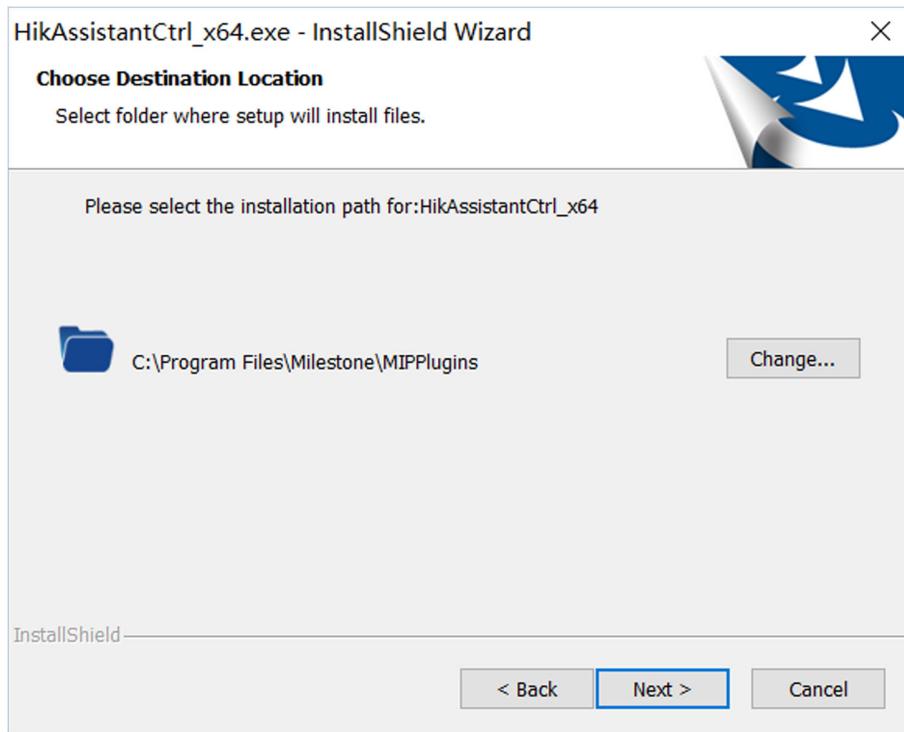
5. Click **Change...** to select a proper directory as the installation location to install the ANPR plug-in, and click **Next**.

---

 **Note**

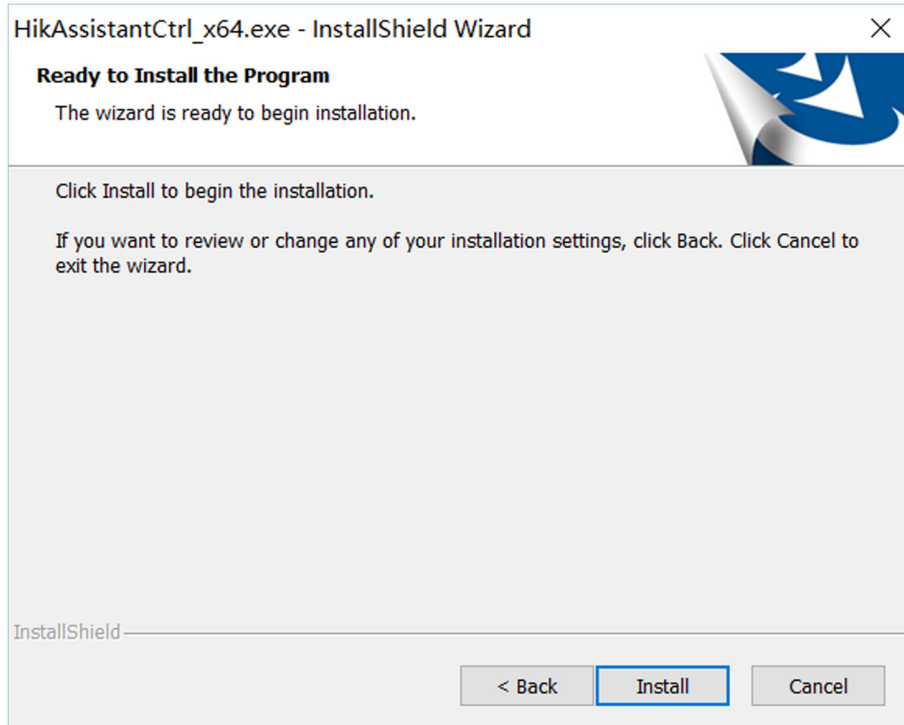
When installing the ANPR plug-in on the Milestone XProtect client software 2017 R3, the installation location must be the default path of **C:\Program Files\Milestone\MIPPlugins** defined by the client software. For other versions of the Milestone XProtect client software, contact the Milestone technical support to get the default installation location of the plug-in.

---



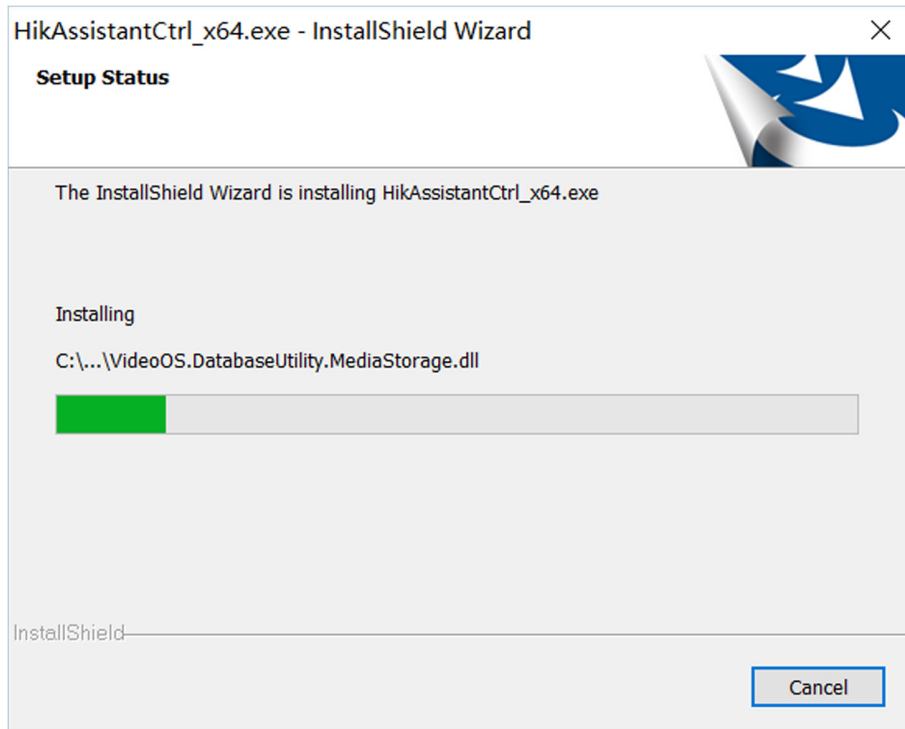
**Figure 2-17 Choose Installation Location of ANPR Plug-in**

6. **Optional:** Click **Back** to review or change any of the installation settings.
7. Click **Install** to start the installation.



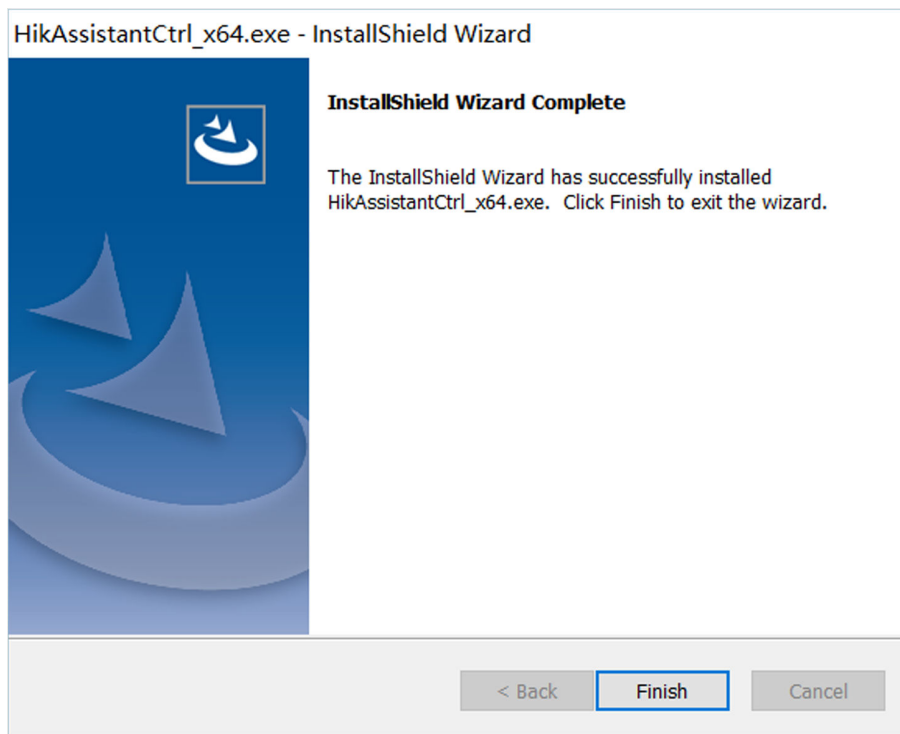
**Figure 2-18 Page of Ready to Install ANPR Plug-in**

After starting installation, the progress bar will appear to show the installation status, and you can click **Cancel** to cancel the installation if needed.



**Figure 2-19 Progress of Installing ANPR Plug-in**

**8.** Click **Finish** to complete the installation after the progress is ended.



**Figure 2-20 Installing ANPR Plug-in Succeeded**

### **What to do next**

Double-click Milestone XProtect Smart Client to run the client software, and the installed ANPR plug-in will be loaded automatically.

## **2.2 Uninstall Plug-ins**

MIP HikAssistant plug-ins provide uninstallation wizard for users to uninstall any of the installed plug-ins. And you can keep the history configuration files to restore the previous settings for next installation. Here we only take uninstalling the HikAssistantService as an example.

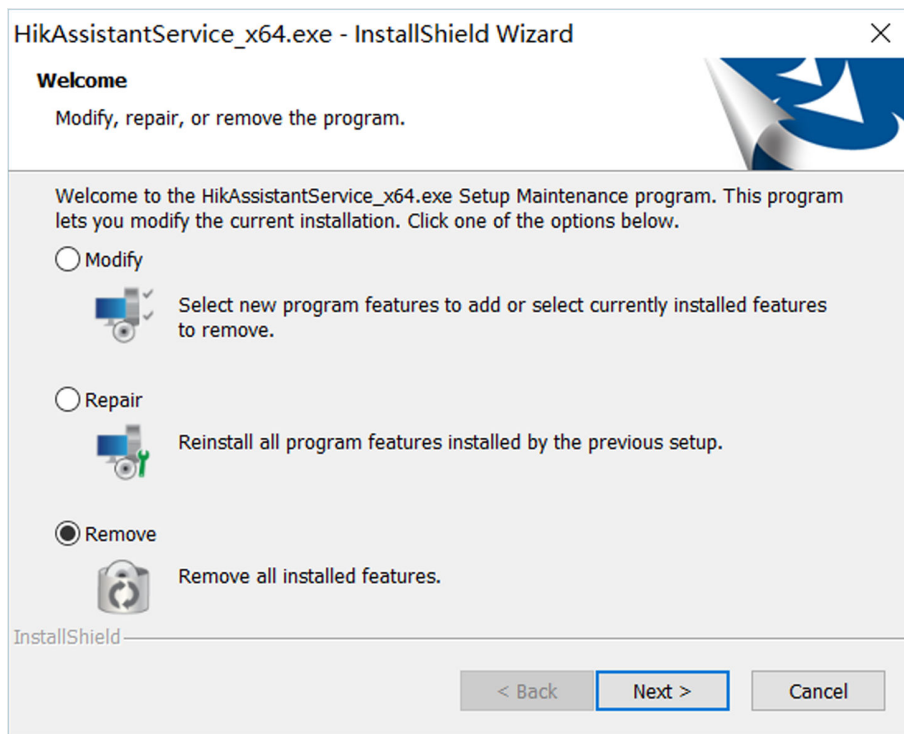
### **Before You Start**

Make sure you have stopped the service or stopped running the plug-in which needs to be uninstalled.

### **Steps**

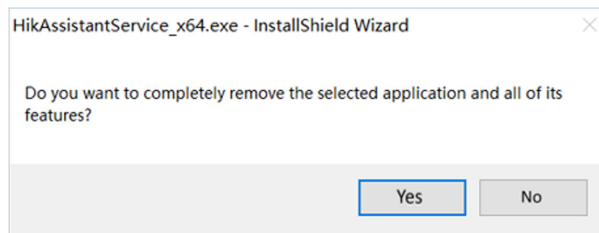
1. Double-click the executable program file of HikAssistantService to enter the welcome page of the InstallShield Wizard.





**Figure 2-21 Welcome Page of HikAssistantService InstallShield Wizard**

2. Select **Remove** and click **Next**, or open Control Panel of the computer and click **Programs and Features** → **HikAssistantService** → **Uninstall** to open the uninstallation confirmation dialog.



**Figure 2-22 Confirm to Uninstall HikAssistantService**

3. Click **Yes** to start uninstalling the plug-in.

---

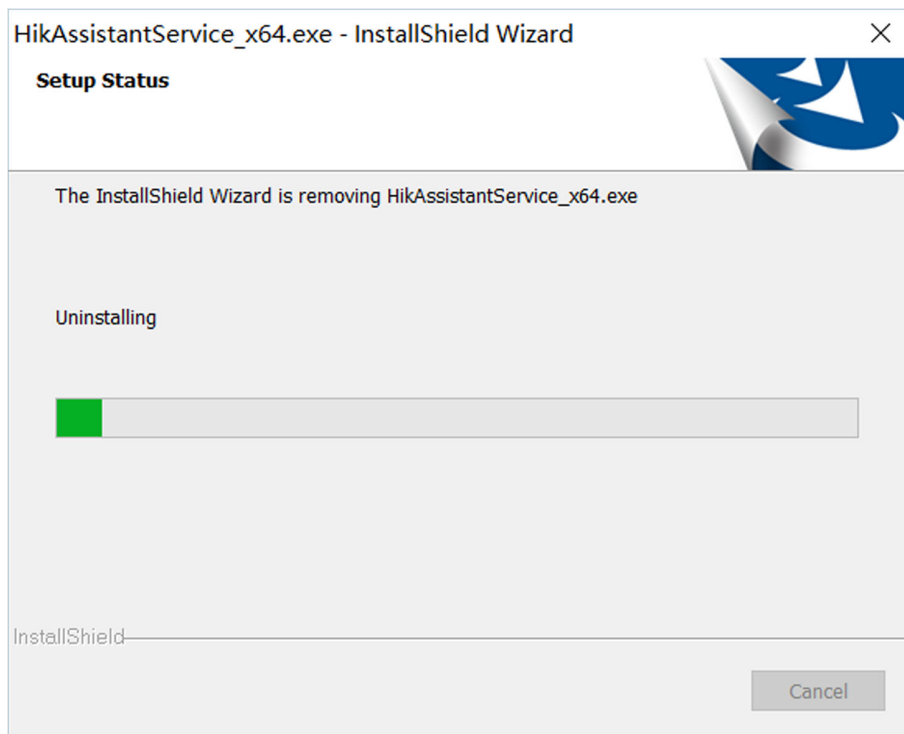
 **Note**

If you are prompted to reboot the computer to complete the uninstallation, please ignore the prompt which may be caused by the following reasons:

- The service or plug-in is still running when uninstalling.
- The installation directory folder of the plug-in is open.

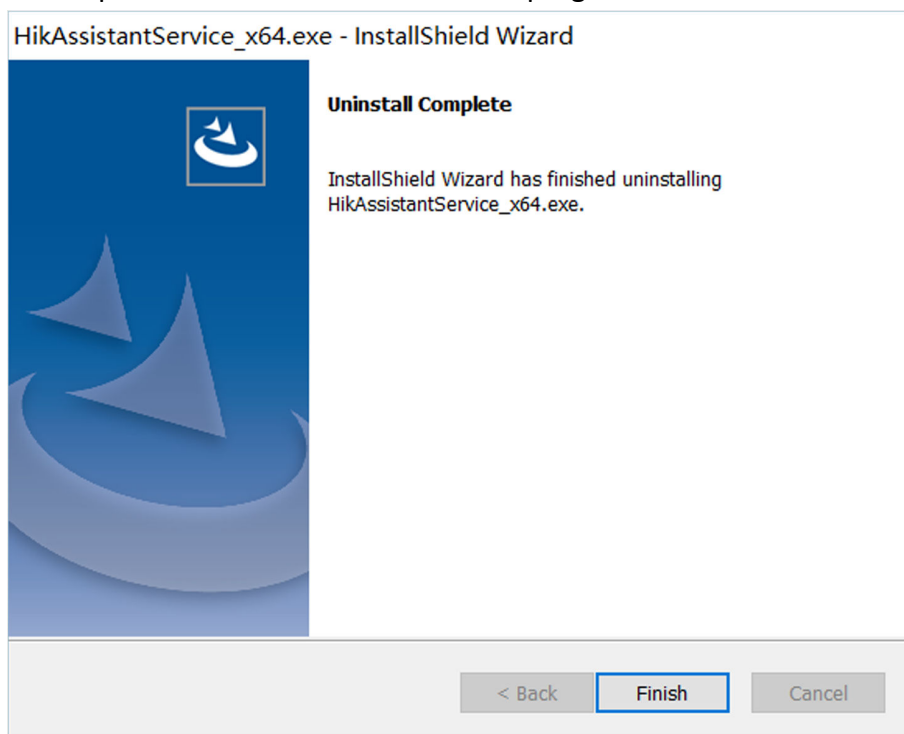
---

After starting uninstallation, the progress bar will appear to show the uninstallation status.



**Figure 2-23 Progress of Uninstalling HikAssistantService**

4. Click **Finish** to complete the uninstallation after the progress is ended.



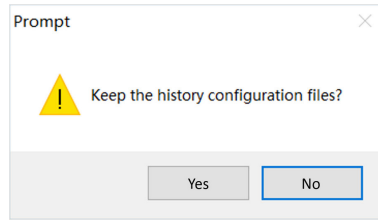
**Figure 2-24 Uninstalling HikAssistantService Succeeded**

5. **Optional:** Click **Yes** to keep the configuration files for next installation if needed.

### Note

The history configuration files are kept under the original directory of the uninstalled plug-in. When you install the plug-in again, the saved history configuration files will be automatically loaded to restore the previous settings.

---



**Figure 2-25 Prompt of Keeping History Configuration Files**

## Chapter 3 Log in to Milestone Server

HikAssistantService supports deployment in a distributed environment. You should log in to the Milestone server via HikAssistantService before the plug-in can provide basic service for the interaction between Hikvision devices and the Milestone server. You can also check the running status of HikAssistantService to make sure that the service of MIP HikAssistant plug-ins is running normally before any other operations.

### Before You Start

- Make sure you have installed Milestone XProtect server. For details about the installation of the Milestone server, refer to the *User Manual of Milestone XProtect VMS*.
- Make sure you have installed HikAssistantService plug-in. For details about the installation of HikAssistantService, refer to ***Install Service Plug-in***.


### Steps

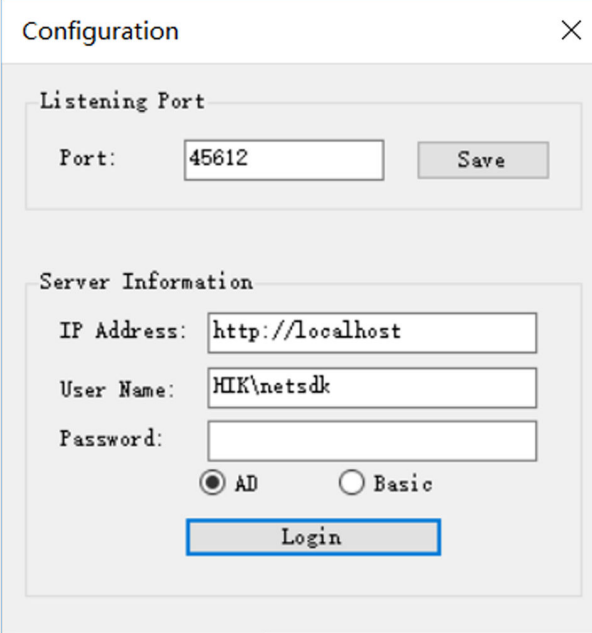
---



Multiple users using HikAssistantService cannot log in to the same Milestone server simultaneously.

---

1. Right-click on the  in the system tray of the task bar and click **Configuration** to open the Configuration dialog.
2. **Optional:** Input the listening port No. in the **Port** field and click **Save** to save the settings.
3. Input the IP address, user name, and password of the Milestone server in the corresponding fields and select the authentication mode.
4. Click **Login**.



Configuration

Listening Port

Port: 45612 Save

Server Information

IP Address: http://localhost

User Name: HIK\netsdk


Password:

AD  Basic

Login

**Figure 3-1 HikAssistantService Configuration Dialog**

After logging in to the Milestone server succeeded, the HikAssistantService will be restarted and then automatically start running.

- 5. Optional:** Hover the cursor on the  in the system tray of the task bar to check the service status.

The running status of HikAssistantService will appear. If HikAssistantService is running normally, the status will be "Service-Running"; otherwise, the status will be "Service-Stopped".

- 6. Optional:** Right-click on the  and click **Start**, **Stop**, or **Exit** to change the status of HikAssistantService.

## Chapter 4 Add Hikvision Device

Hikvision devices should be added to the Milestone XProtect before you can do any other configurations and operations using MIP HikAssistant plug-ins, such as live view, playback, receiving events and alarms, etc.

### Before You Start

Make sure you have installed Milestone XProtect Management Client. For details about the installation of the Management Client, refer to the *User Manual of Milestone XProtect VMS*.

### Steps

1. Log in to Milestone XProtect Management Client.
2. Click **Servers** → **Recording Servers** in the Site Navigation panel to show the organization list of Recording Server.
3. Select a computer in the organization list and click **Action** → **Add Hardware...** in the upper-left corner of the home page to open the Add Hardware wizard page.

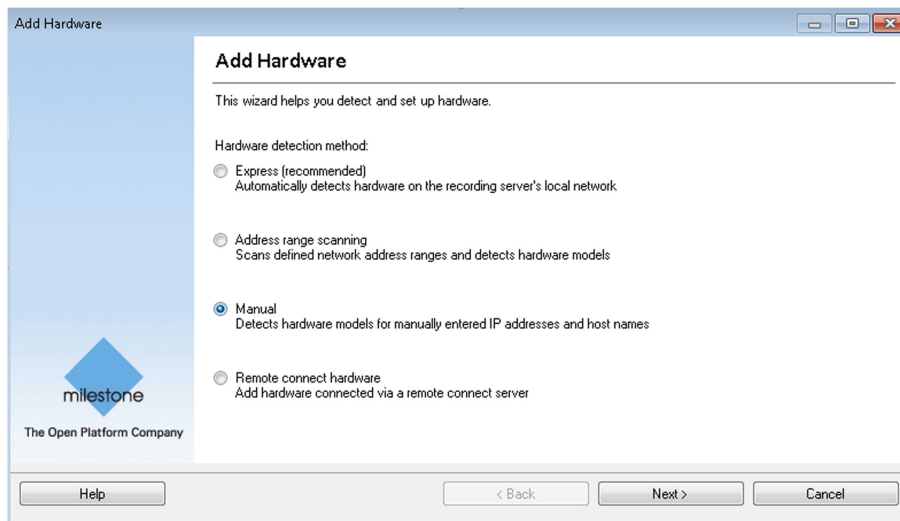
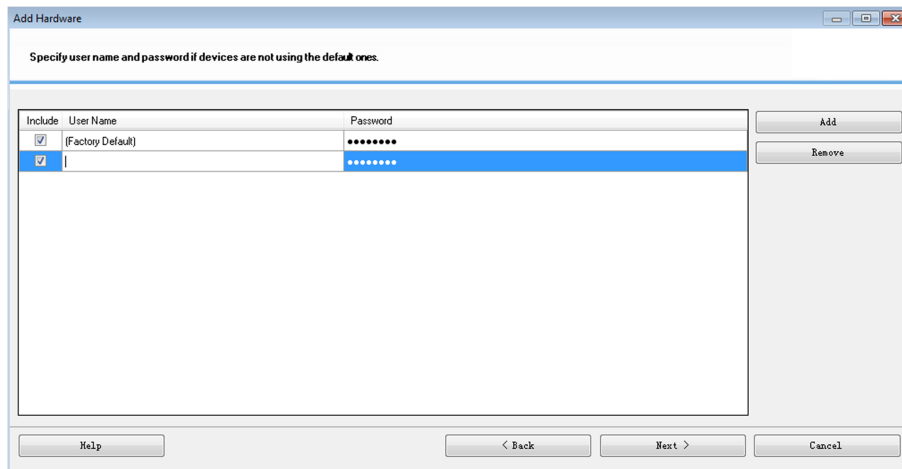


Figure 4-1 Add Hardware Wizard Page

4. Select **Manual** as the hardware detection method and click **Next**.
5. Click **Add** at the right, input the user name and password of the device, and click **Next**.

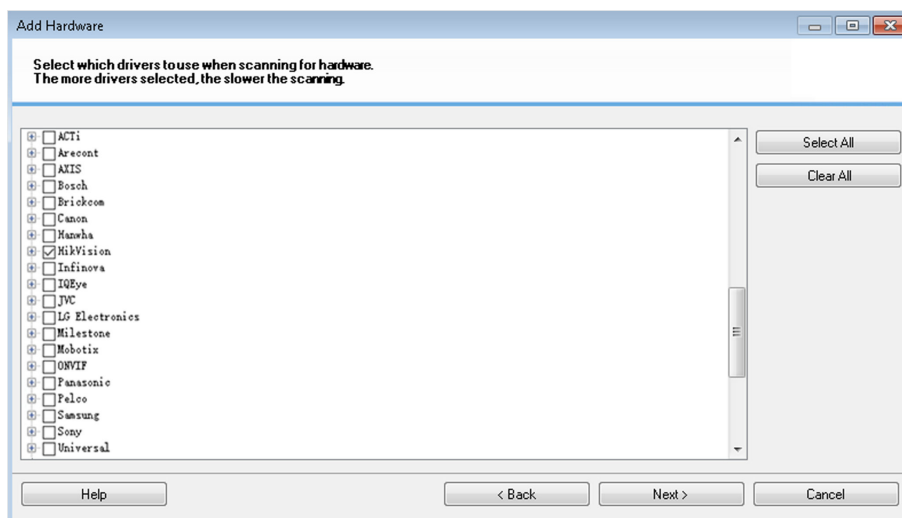


**Figure 4-2 Specify User Name and Password of Device**

6. Check the checkbox(es) to select drivers to use when scanning for device, and click **Next**.

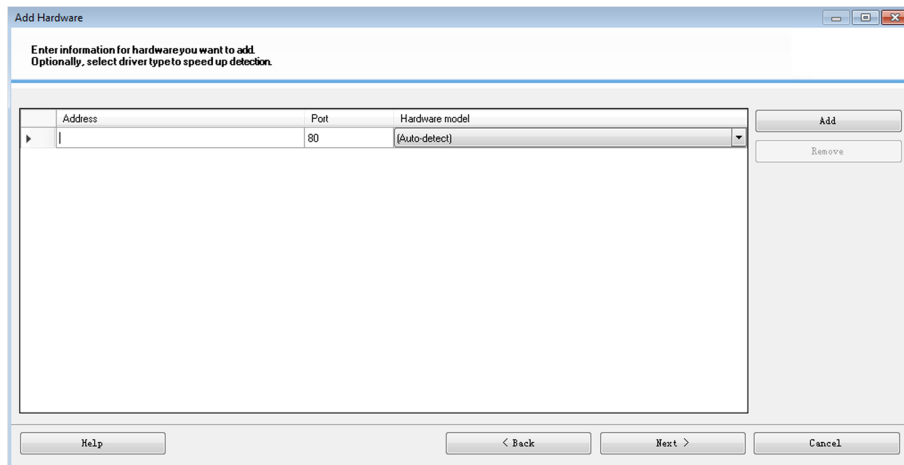


The recommended drivers are **Hikvision**.



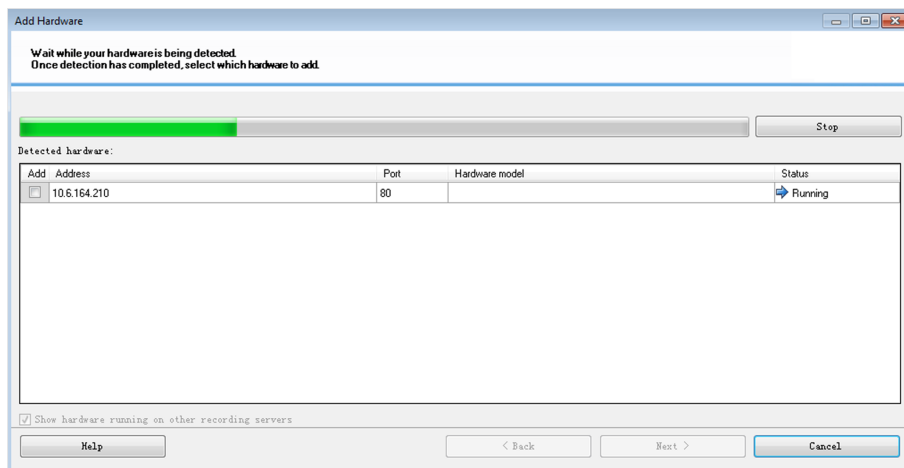
**Figure 4-3 Select Drivers Used to Scan for Device**

7. Set the information (including IP address, port No., and hardware model) for the device that you want to add.
  - Input IP address and port No. of the device in the corresponding fields, and select **Auto-detect** from the Hardware model drop-down list.
  - Click **Add** at the right to set the information for multiple devices with the same user name and password, input IP address and port No. of each device, and select **Auto-detect** from the Hardware model drop-down list for each device.



**Figure 4-4 Set Device Information**

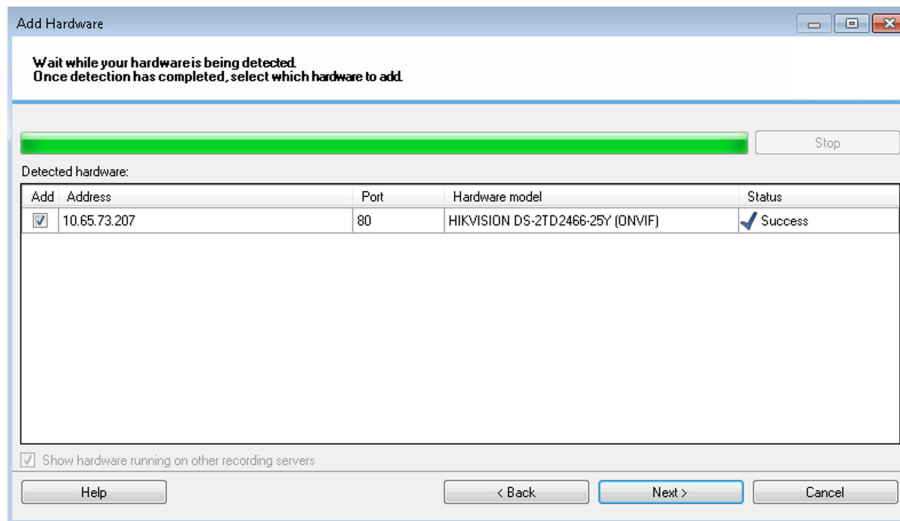
8. Click **Next** to start detecting the added device.



**Figure 4-5 Detect Added Device**

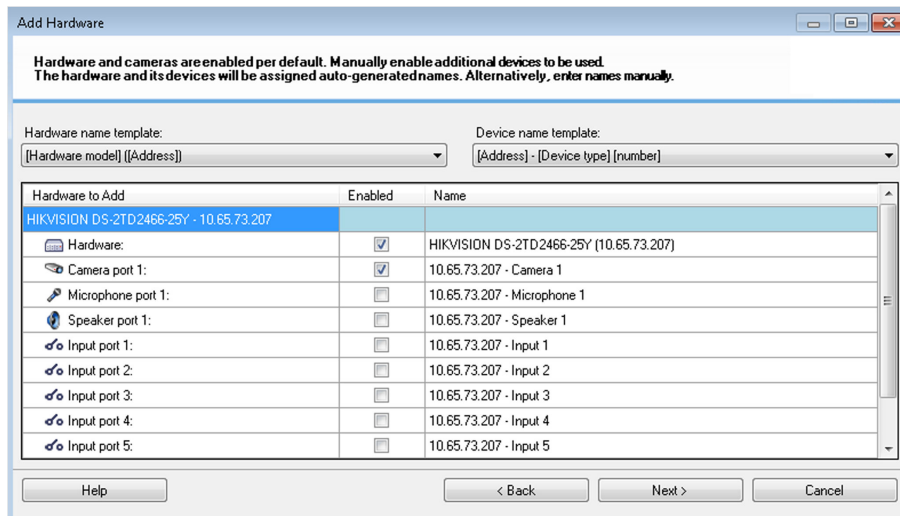
9. Click **Next** to connect the Milestone XProtect to the device and get the device information.





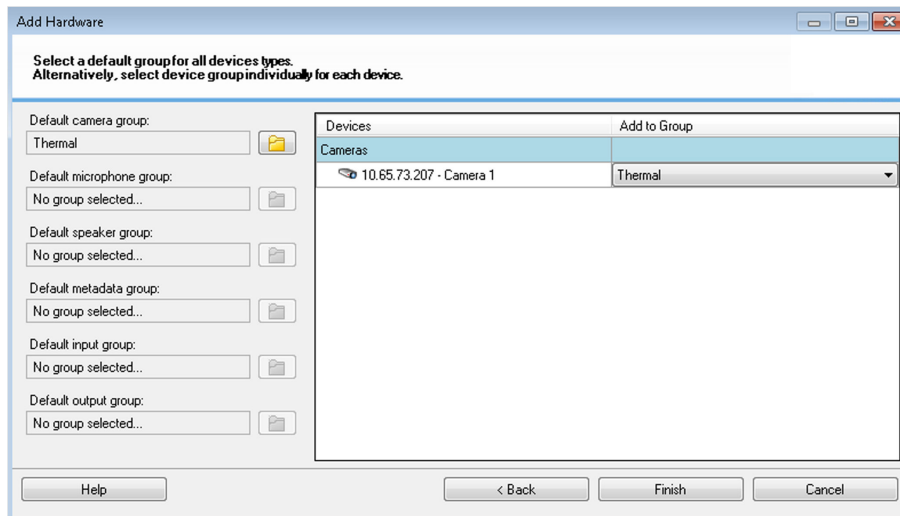
**Figure 4-6 Connect Milestone XProtect to Device**

10. Click **Next** to select the component(s) of the device to enable and set the name template.



**Figure 4-7 Select Components to Enable and Set Name Template**

11. Click **Next** to select group(s) for the added device component(s).



**Figure 4-8 Select Groups for Added Device Components**

12. Click **Finish** to complete adding the Hikvision device.

---

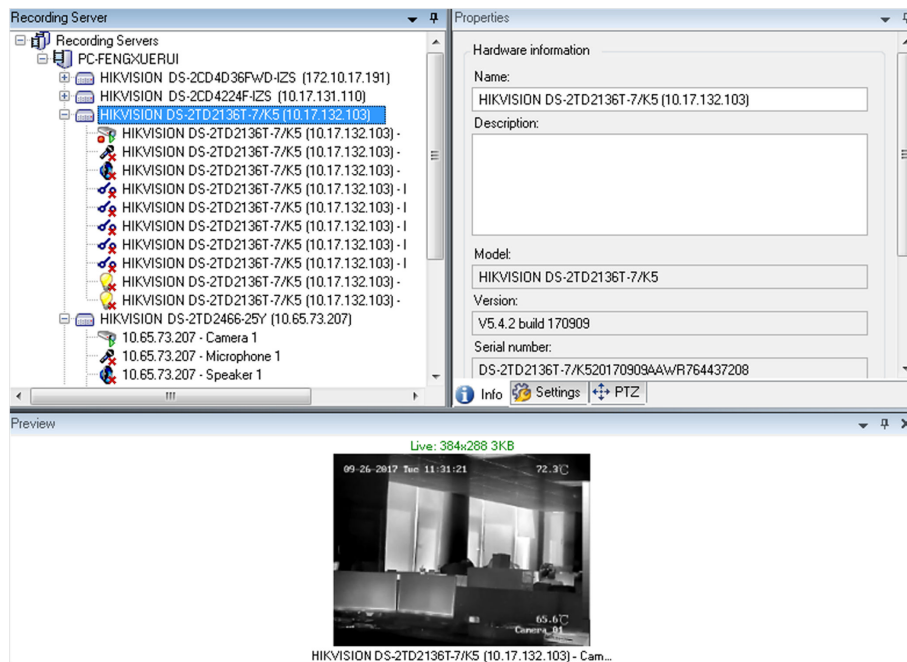
 **Note**

After adding Hik-Gateway to Milestone XProtect, the IP address of the computer running with Milestone XProtect will be locked for half an hour if changing the password of Hik-Gateway, and you cannot perform any operations on Hik-Gateway using MIP HikAssistant plug-ins during that time.

---

The added device will be listed in the recording server organization list, and you can view the properties and live view of the linked camera.

# MIP HikAssistant Plug-ins (ANPR) User Manual



**Figure 4-9 View Properties and Live View of Added Device**

## Chapter 5 Receiving Settings

To receive event and alarm information uploaded by Hikvision devices on Milestone XProtect Smart Client, you should configure the event and alarm receiving parameters on Milestone XProtect Management Client, including enabling event and alarm receiving, adding corresponding event types, and setting event linkage.

### 5.1 Enable ANPR Result Receiving

You should enable the ANPR function for the devices on Milestone XProtect Management Client, and then the devices can upload the ANPR information to Milestone XProtect.

#### Before You Start

- Make sure you have installed the ANPR plug-in in the computer running with Milestone XProtect Management Client and loaded the plug-ins. For details about the installation of the ANPR plug-in, refer to **Install ANPR Plug-in on Management Client**.
- Make sure you have added the Hikvision device with ANPR function to the Milestone XProtect. For details about adding devices to the Milestone XProtect, refer to **Add Hikvision Device**.

#### Steps

1. Log in to Milestone XProtect Management Client.
2. Click **MIP Plug-ins** → **hikvision** → **Video** in the Site Navigation panel to open the Configuration page.
3. Click **ANPR** tab to enter the ANPR configuration page.

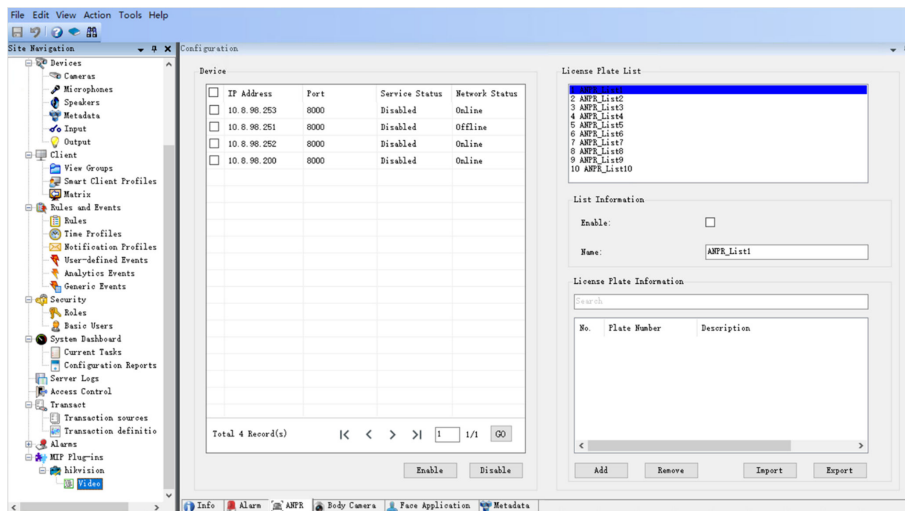


Figure 5-1 ANPR Configuration Page

4. Check the checkbox(es) to select device(s).
5. Click **Enable** to enable the ANPR function of the selected device(s).

The ANPR function status of the device turns to **Enabled** in the **Service Status** column.

6. **Optional:** Check the checkbox(es) of the device(s) with ANPR enabled, and click **Disable** to disable the ANPR function of the device(s).

### 5.2 Configure License Plate List

The ANPR plug-in provides 10 predefined match lists to manage the license plates and control the vehicle passing according to the ANPR results. You can choose the lists to take effect and edit their name as desired, and then add license plate information to different lists or directly import multiple license plates in a batch. You can also export all license plate information of each list to the local computer.

#### Before You Start

- Make sure you have installed the ANPR plug-in in the computer running with Milestone XProtect Management Client and loaded the plug-in. For details about the installation of the ANPR plug-in on the Management Client, refer to ***Install ANPR Plug-in on Management Client*** .
- Make sure you have added the Hikvision device with ANPR function to the Milestone XProtect. For details about adding devices to the Milestone XProtect, refer to ***Add Hikvision Device*** .

#### Steps

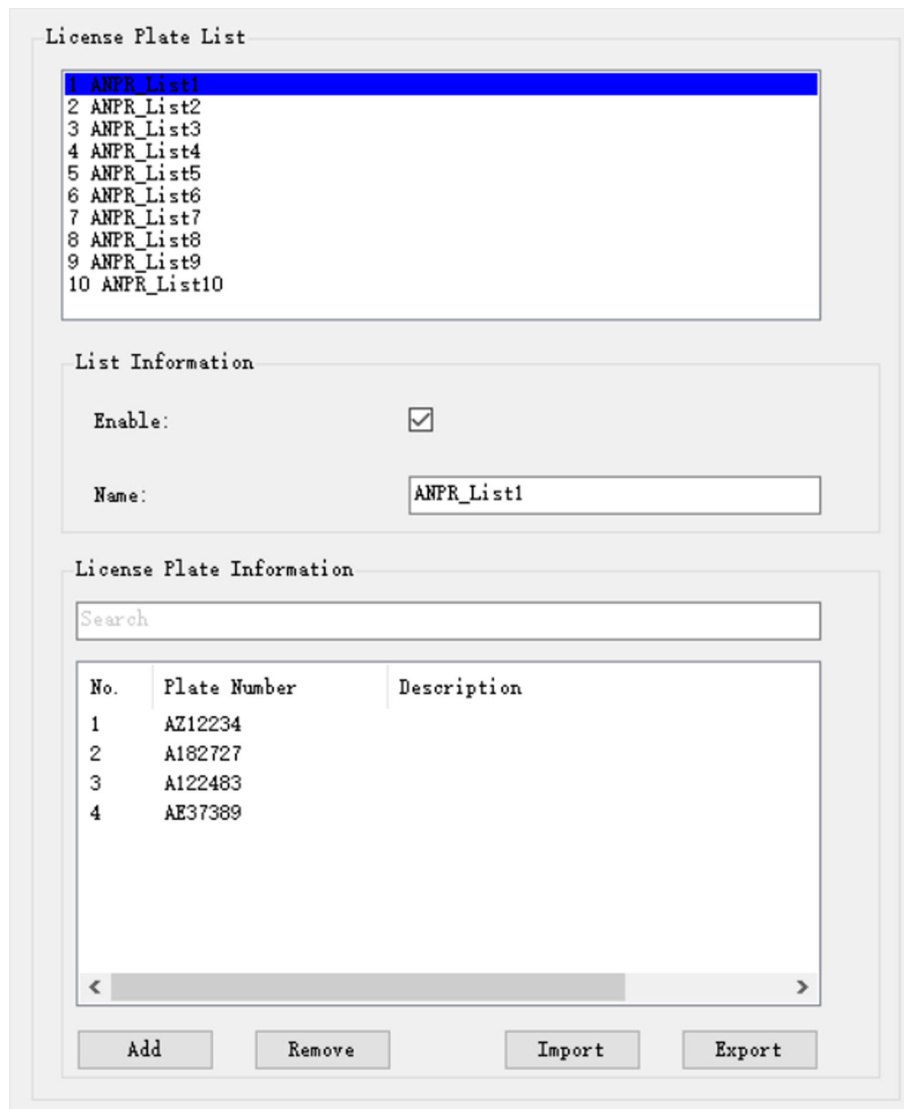
---



Up to 1000 items of license plate information can be added to each license plate list.

---

1. Log in to Milestone XProtect Management Client.
2. Click **MIP Plug-ins** → **hikvision** → **Video** in the Site Navigation panel to open the Configuration page.
3. Click **ANPR** tab to enter the ANPR configuration page.  
The License Plate List panel will appear on the right.



**Figure 5-2 License Plate List Panel**

4. Select a license plate list in the list on the right panel.
5. Check **Enable** to enable the selected license plate list.
6. **Optional:** Edit the license plate list name if needed.

---

 **Note**

The custom license plate list name will appear on Milestone XProtect Smart Client.

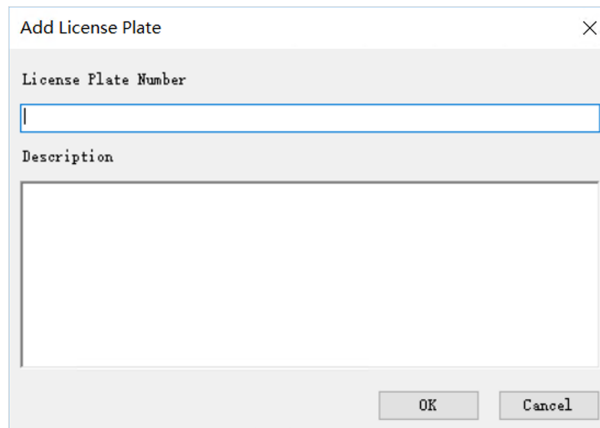
---

7. Click **Add** to add a license plate to the selected list or click **Import** to add license plates in a batch.

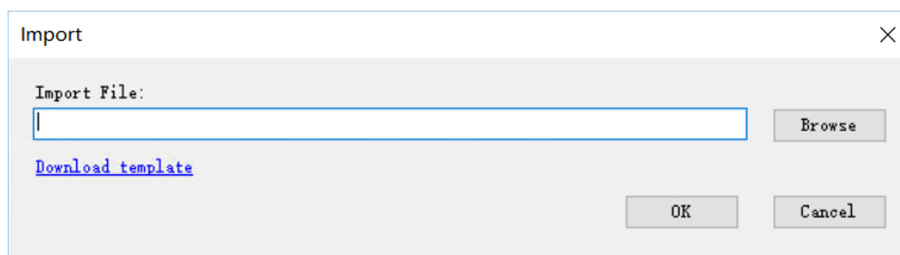
## Note

Before importing multiple license plates in a batch, you should click **Download template** on the Import dialog to download the list template, fill in the template with the license plate information, and then import the filled template.

---



**Figure 5-3 Add License Plate One by One**



**Figure 5-4 Import License Plates in a Batch**

8. **Optional:** Select an added license plate and click **Remove** to remove the license plate from the list.
9. **Optional:** Click **Export** to export the license plate list to your local computer.

## 5.3 Add ANPR Event Type

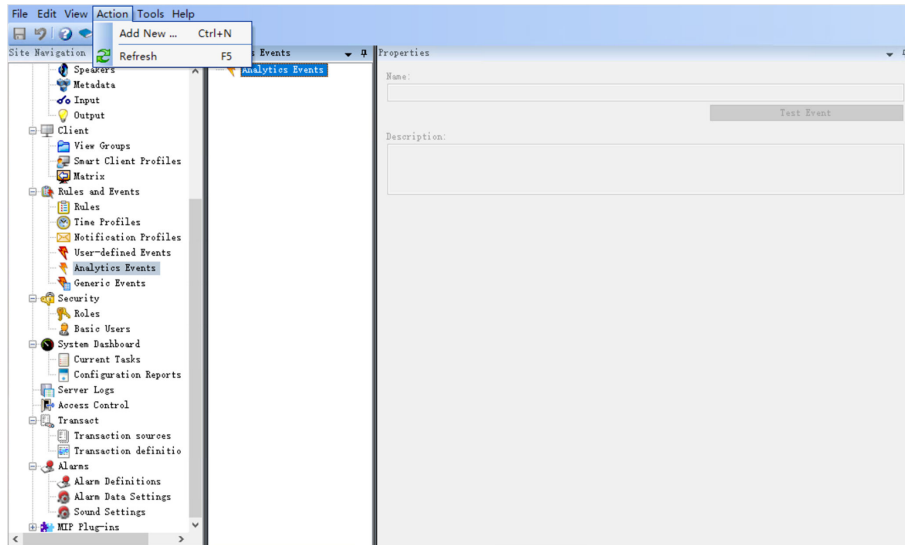
To receive the ANPR information of Hikvision devices on Milestone XProtect Smart Client, you should add the predefined ANPR event type to Milestone XProtect Management Client as the alarm triggering event.

### Before You Start

- Make sure you have installed the ANPR plug-in in the computer running with Milestone XProtect Management Client and loaded the plug-ins. For details about the installation of the ANPR plug-in, refer to ***Install ANPR Plug-in on Management Client*** .
- Make sure you have added the Hikvision device with ANPR function to the Milestone XProtect. For details about adding devices to the Milestone XProtect, refer to ***Add Hikvision Device*** .

## Steps

1. Log in to Milestone XProtect Management Client.
2. Click **Rules and Events** → **Analytics Events** in the Site Navigation Panel to open the adding event page.
3. Select the root organization in the Analytics Events panel and click **Action** → **Add New...** in the upper-left corner of the home page to activate the Properties panel at right.



**Figure 5-5 Select Root Organization to Add Event Type**

4. Input the event type in the **Name** field, and input the event type description in the **Description** field if needed.

### Note

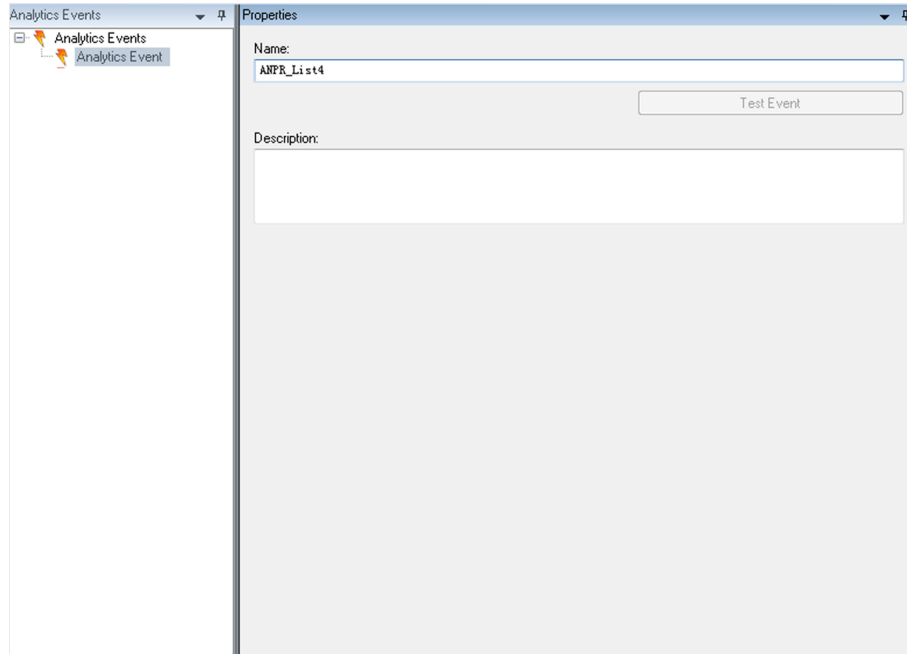
You should set the event type names for different ANPR event types according to the names in the **Event Type Name** column of the following table.

**Table 5-1 Event Types and Event Type Names for ANPR Function**

Event Type	Event Type Name
ANPR	ANPR_List1
	ANPR_List2
	ANPR_List3
	ANPR_List4
	ANPR_List5
	ANPR_List6
	ANPR_List7
	ANPR_List8



Event Type	Event Type Name
	ANPR_List9
	ANPR_List10
	ANPR_NoMatch



**Figure 5-6 Set Event Type for ANPR Function**

5. Click  at the top of the Site Navigation panel to save the settings.

## 5.4 Set ANPR Event Linkage

After adding the ANPR event type, you should configure event linkage, such as triggering event, triggering source, alarm activation period, operator actions, and so on, on Milestone XProtect Management Client before you can get the ANPR information on Milestone XProtect Smart Client.

### Before You Start

- Make sure you have installed the ANPR plug-in in the computer running with Milestone XProtect Management Client and loaded the plug-ins. For details about the installation of the ANPR plug-in, refer to ***Install ANPR Plug-in on Management Client*** .
- Make sure you have added the Hikvision device with ANPR function to the Milestone XProtect. For details about adding devices to the Milestone XProtect, refer to ***Add Hikvision Device*** .

### Steps

1. Log in to Milestone XProtect Management Client.
2. Click **Alarms** → **Alarm Definitions** in the Site Navigation panel to open the alarm settings page.

3. Select the root organization in the Alarm Definitions panel and click **Action → Add New...** in the upper-left corner of the home page to activate the Properties panel at right.

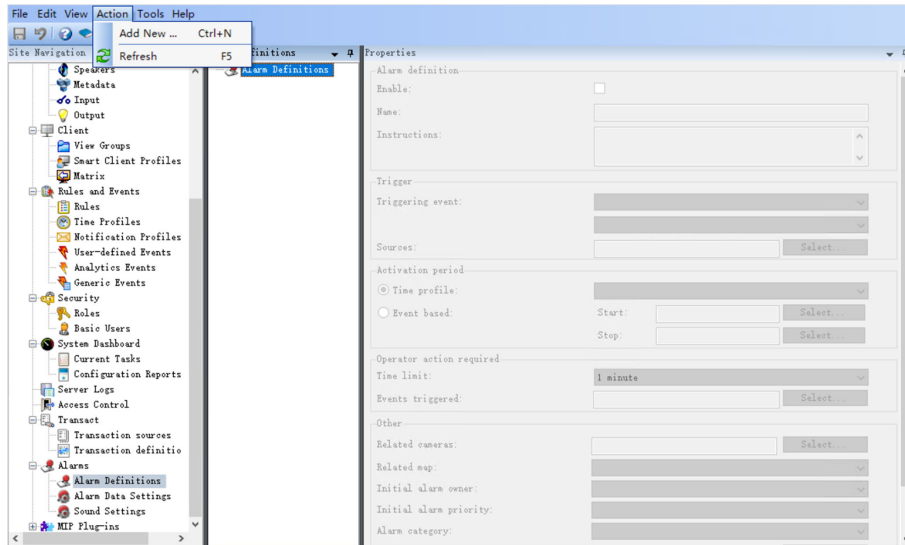


Figure 5-7 Select Root Organization to Add Event Linkage

4. Input the event linkage name and event linkage instructions in the Alarm definition area.

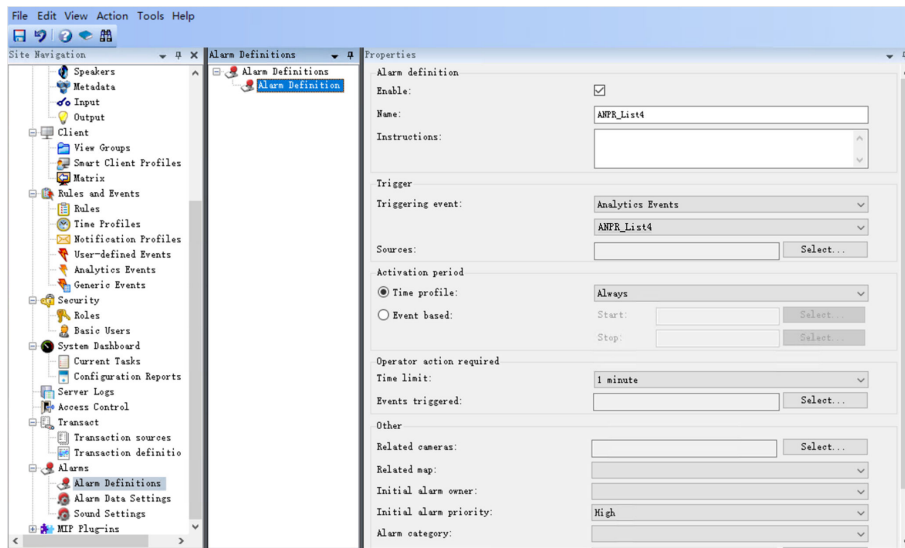
### Note

- The ANPR event linkage name must be the same as the name of the added ANPR event type that you want to set event linkage for.
- The ANPR event type, ANPR event linkage, and license plate list are related together by the original license plate list name. If the license plate list name is changed, it will trigger ANPR event linkage with the original license plate list name. For example, if you change the license plate list name from "ANPR\_List1" to "Blacklist", the license plate list "Blacklist" will trigger the event linkage actions defined by "ANPR\_List1"; and if you change the license plate list name from "ANPR\_List2" to "Whitelist", the license plate list "Whitelist" will trigger the event linkage actions defined by "ANPR\_List2", and so on.

5. Select **Analytics Events** as the major type of Triggering event and activate the minor type field, and then select the minor type of Triggering event.

### Note

The selectable minor types are those added as ANPR analytics event types. For details about adding event types, refer to **Add ANPR Event Type**.



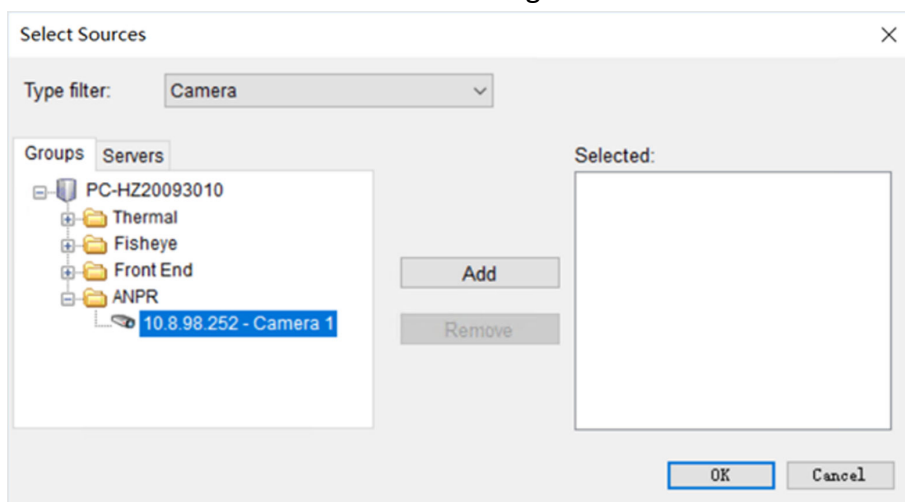
**Figure 5-8 Set Properties for ANPR Event Linkage**

6. Click **Select...** in the **Source** field to open the Select Sources dialog and select the triggering sources.
  - 1) **Optional:** Select a source type in the **Type filter** field.
  - 2) Click **Group** tab, unfold the source list, and select an added camera in the list.
  - 3) Click **Add** to add the selected camera to the right panel.


 **Note**

You can repeat the above steps to add multiple sources.

- 4) **Optional:** Select the added camera on the right panel and click **Remove** to remove the camera.
- 5) Click **OK** to save the selection and close the dialog.



**Figure 5-9 Set Triggering Sources**

7. **Optional:** Set other event parameters, such as alarm activation period, operator actions, and so on. For details about the alarm configuration, refer to *User Manual of Milestone XProtect VMS*.
8. Click  at the top of the Site Navigation panel to save the settings.
9. Click **Rules and Events** → **Rules** in the Site Navigation panel to open the rules configuration page and set event linkage rules for the ANPR analytics events.

---

### **Note**

You can configure different event linkage rules for ANPR events triggered by different license plate lists. For example, you can configure video recording for ANPR\_List1, audible warning for ANPR\_List2, locking or unlocking the access control point for ANPR\_List3, etc. For details about the rule configuration, refer to the *User Manual of Milestone XProtect VMS*.

---

## Chapter 6 Receive ANPR Result

After enabling ANPR function and configuring license plate list on Milestone XProtect Management Client, the ANPR camera configured with ANPR alarm rules will automatically send ANPR information to Milestone XProtect Smart Client once the alarm is triggered. You can log in to the Smart Client to receive the real-time ANPR alarms, view the alarm details, and search for the history ANPR events.

### Before You Start

- Make sure you have installed the ANPR plug-in in the computer running with Milestone XProtect Smart Client and loaded the plug-in. For details about the installation of the ANPR plug-in on the Smart Client, refer to *Install ANPR Plug-in on Smart Client*.
- Make sure you have configured the event or alarm rules for the ANPR or traffic camera via web browser. For detailed configuration about the ANPR event or alarm rules, refer to the user manual of the ANPR camera or the traffic camera.

### Steps

1. Log in to Milestone XProtect Smart Client.
2. Click **ANPR** tab to enter the ANPR event center.

The ANPR alarms are listed in the ANPR Info panel at the bottom of ANPR event center. You can check the alarm time, matched list (if matched), license plate number, alarm source, vehicle color, vehicle type, etc.

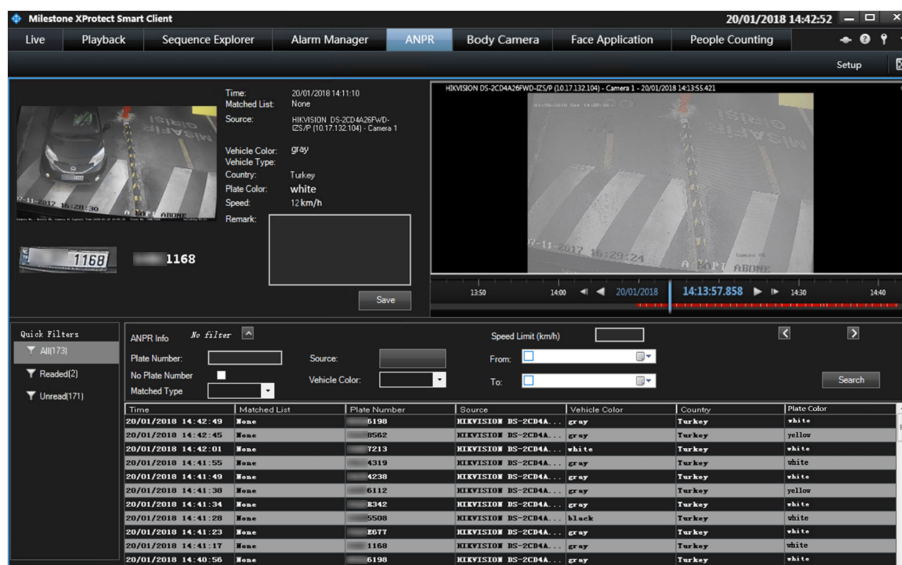






Figure 6-1 ANPR Event Center

3. Click an ANPR alarm in the list to show the recognized license plate information (including picture contained vehicle and license plate, license plate picture, license plate number, and so on) and related alarm video above the ANPR Info panel.
4. **Optional:** Add the remarks for the real-time ANPR result.

- 5. Optional:** Drag the timeline to view the alarm video, or click  /  to play or reversely play the video, or click  /  to play or reversely play the video by single frame.
- 6. Optional:** Unfold the filter panel to set the filter conditions (such as license plate number, alarm source, matched type, vehicle color, time period, speed limit, etc.) or select the quick filter at the left of ANPR Info panel to search for the ANPR events if needed.
- 7. Optional:** Perform the following operation(s) after searching for the ANPR events.

**Add Remarks**      You can also add remarks for the license plate after searching ANPR events. Remarks can be added for search results only when the **Matched Type** is set to **Match**.

**Receive ANPR Alarm in Alarm Manager**      You can receive the ANPR alarms in the Alarm Manager of Milestone XProtect Smart Client. For more operations of the Alarm Manager, refer to the *User Manual of Milestone XProtect Smart Client*.

